

22/23





COVER PHOTO: Model Erkado Haven laminate mist-grey 3 panel. Erkado decorative panels: decorative strip - graphite ash CPL, adapter - black CPL. NEW.

WELCOME

DEAR CUSTOMER,

Here is our **NEW** brochure for **2022/23**.

Inside you will find an extensive range of modern, contemporary and traditional door designs. Complementary timber moulding profiles are shown also, offering a broad range of skirting, architrave and door frame options.

Lastly, we have the elegant style of the **ARTE TOSCANA** door handle range for that all-important finishing touch.

WHAT'S NEW?

New for 2022/23 is the **DECORATIVE WALL PANELS** from Erkado (pages 6-11). Expertly crafted and intriguingly tactile this wall cladding system literally brings a third dimension to your favourite living space.

Due to the popularity of our **ERKADO DOOR RANGE** we've decided to add 6 new models in mist grey – Harbour and Haven models are available in solid and glass variants (pages 12-19).

The **TACTO RANGE** doors from Puertas Proma (pages 20-25) are now available in standard sizes ex-stock.

Our popular **EUROPEAN** and **DAIKEN RANGES** have been expanded with the addition of Milan and Eclipse models in solid and glass options (pages 42-53 and 54-63).

Also please see the popular **BELGRAVIA RANGE** on pages 28-33 and the beautiful **RENAISSANCE RANGE** on pages 34-41.

We hope you'll enjoy our 2022/23 brochure with its new additions to our ranges and that it'll assist you in making the right choice for your new projects.

Warm Regards,
Doras Distributors

FIND YOUR LOCAL STOCKIST

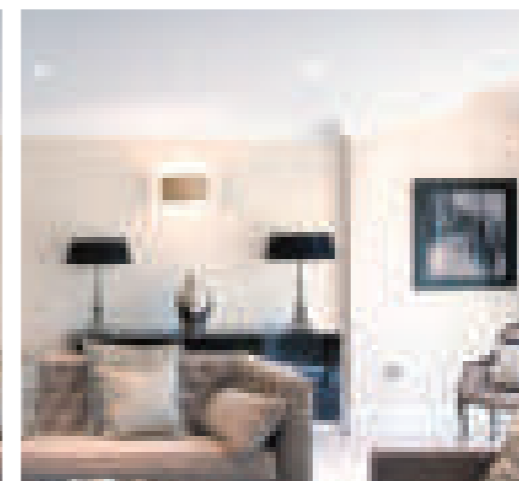
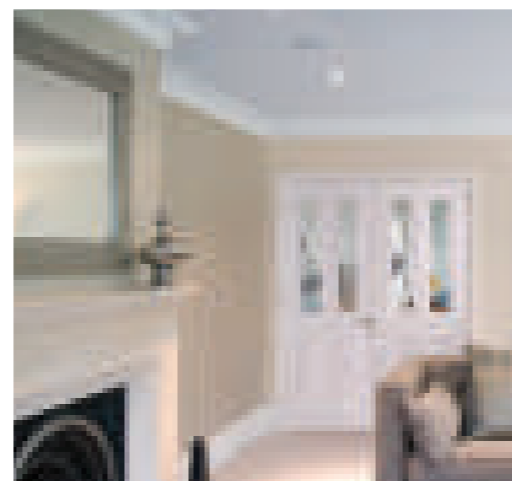
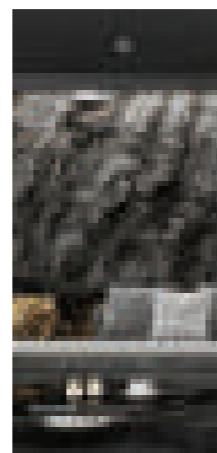
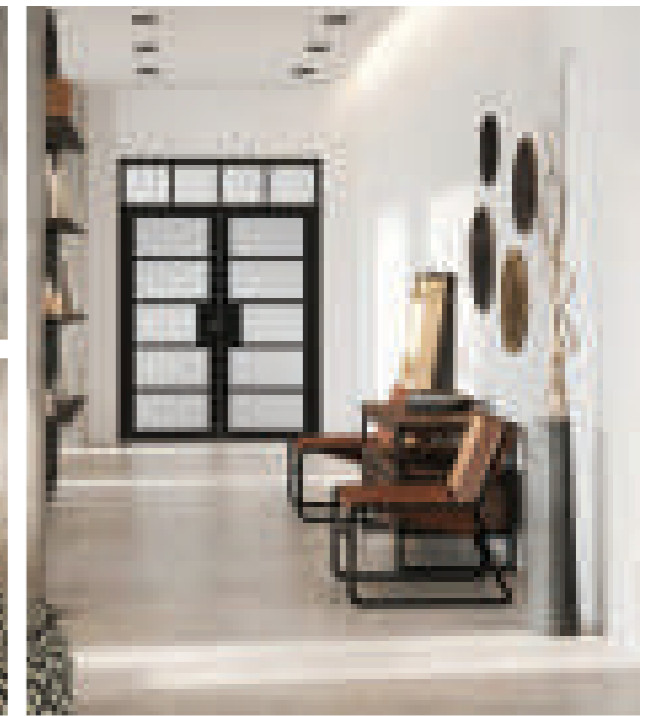
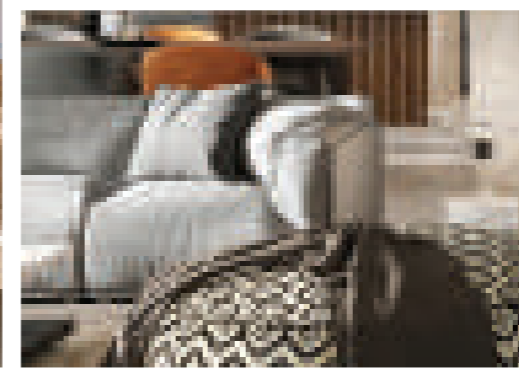
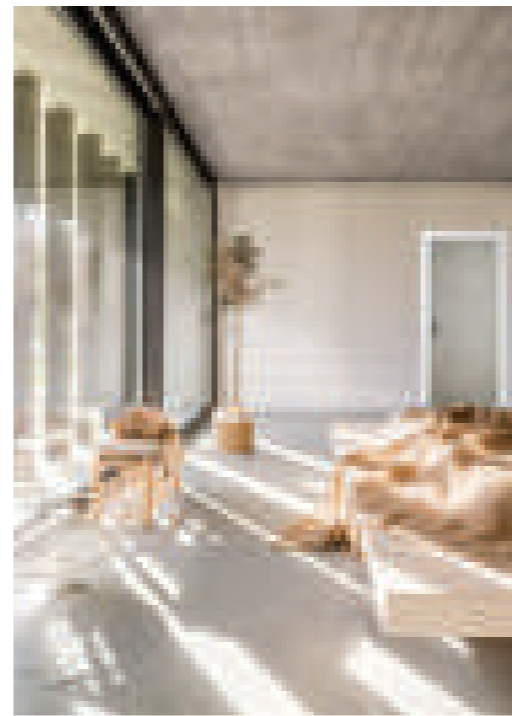
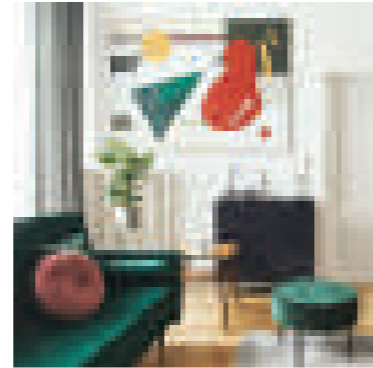
Doras Distributors is a wholesale company and as such deals exclusively with builders' merchants and retail door outlets.

We do not deal directly with the public but if you like our products and require further information or wish to see the doors themselves on display you may contact your local supplier.

A list of nationwide suppliers can be found on our website www.dorasdoors.com under the "Where to buy" tab.

INDEX

Erkado Decorative Panels	NEW RANGE	06
Erkado Range	NEW MODELS	12
Proma Range	NEW MODELS	20
Belgravia Range		28
Renaissance Range		34
European Range	NEW MODELS	42
Daiken Range	NEW MODELS	54
Contract Range		64
Java Range		72
Victoria Traditional Range		80
Arctic Selection Range		84
Fire Door Range	NEW MODELS	92
Red Deal Range		120
Ironmongery Section		122
Mouldings Section		132
Promotional Section		142
Doras Door Protection		144



NEW RANGE

PHOTO: Decorative panels - oak CPL, adapter - black CPL-NEW.



We are excited to present a new range from Erkado - **DECORATIVE WALL PANELS**. Expertly crafted and intriguingly tactile this wall cladding system literally brings a third dimension to your favourite living space.

Decorative panels can be mounted on the wall as a decorative element. At the same time they reduce the noise and improve the acoustics in the room.

Mounting is possible in several ways: the decorative skirting board can be mounted to the wall by means of a mounting strip only or with the use of adapters which constitute a base for the panels.

Decorative panels are available in CPL laminates which can be put together in combinations of your choice.

ERKADO

decorative wall panels

ERKADO



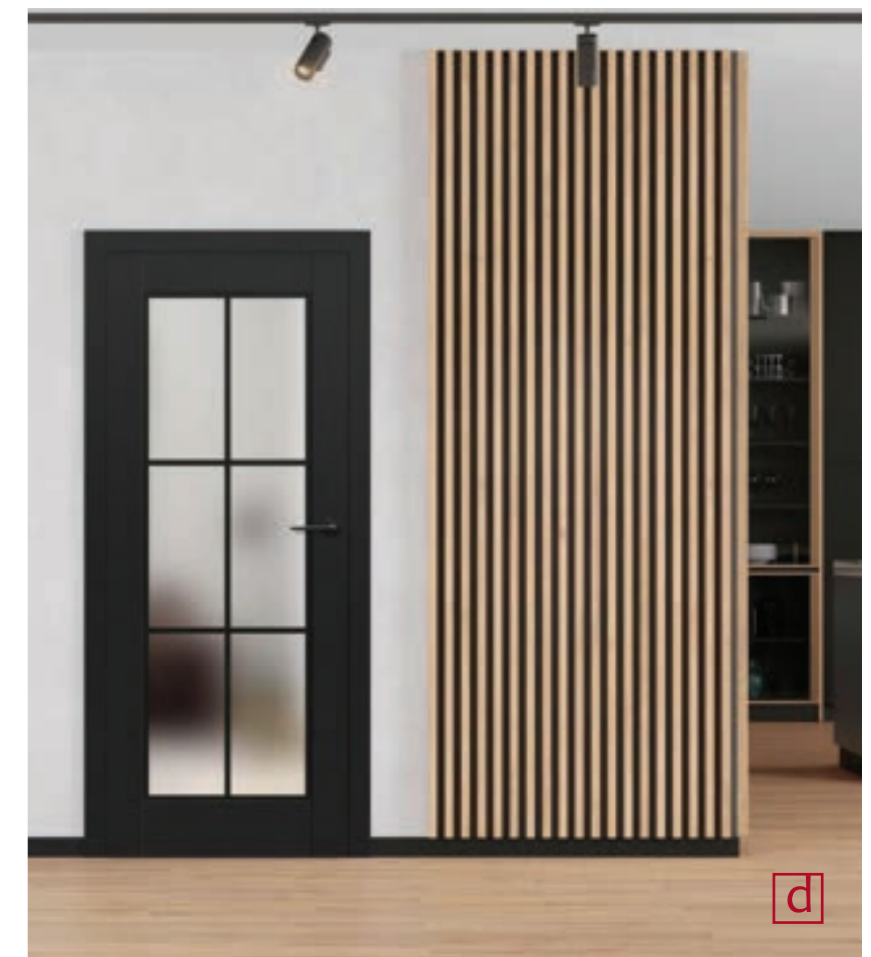
a



b



c



d

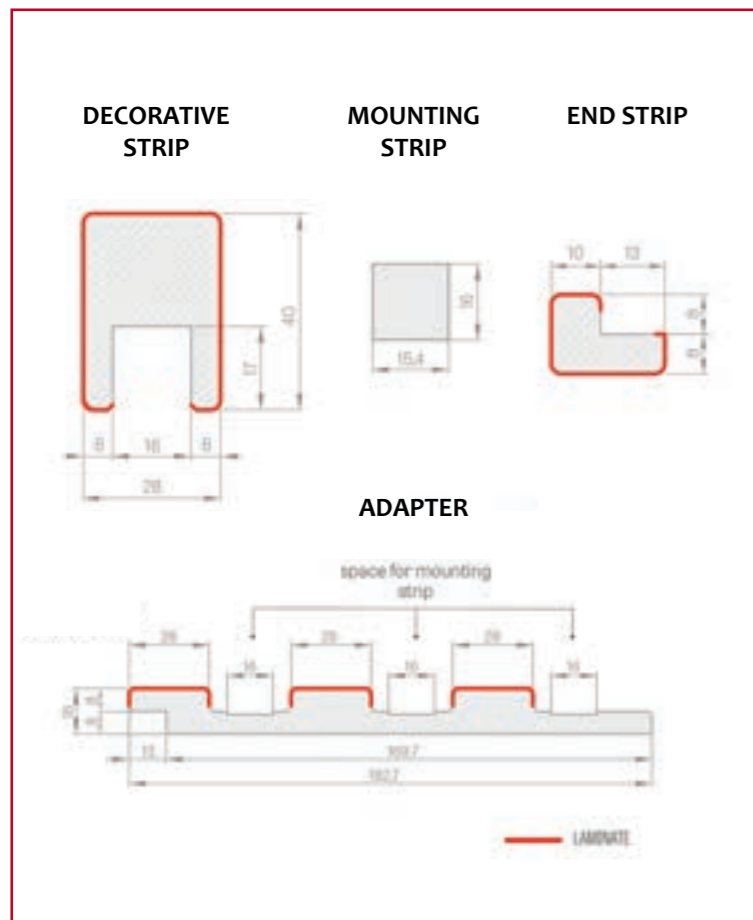
ERKADO

- a - Decorative strip - oak CPL, adapter - black CPL; door available by special order
- b - Decorative strip - oak CPL, adapter - white bark CPL (*available only by special order*); door - Haven laminate mist grey (*obscure glass*)
- c - Decorative strip - black CPL, adapter - black CPL; door available by special order
- d - Decorative strip - oak CPL, adapter - black CPL; door available by special order

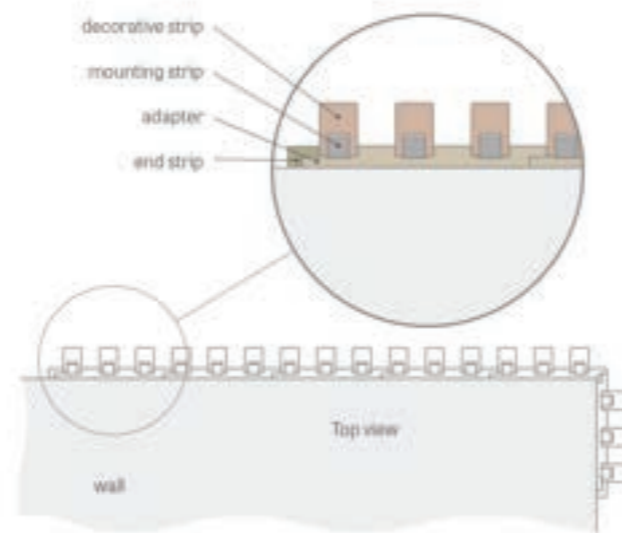


- a - Decorative strip - oak CPL, adapter - black CPL; door available by special order
- b - Decorative strip - oak CPL, adapter - black CPL (detail)
- c - Decorative strip - graphite ash CPL, adapter - black CPL; door - Haven laminate mist grey 3 panel

HOW DOES THE WALL CLADDING SYSTEM WORK

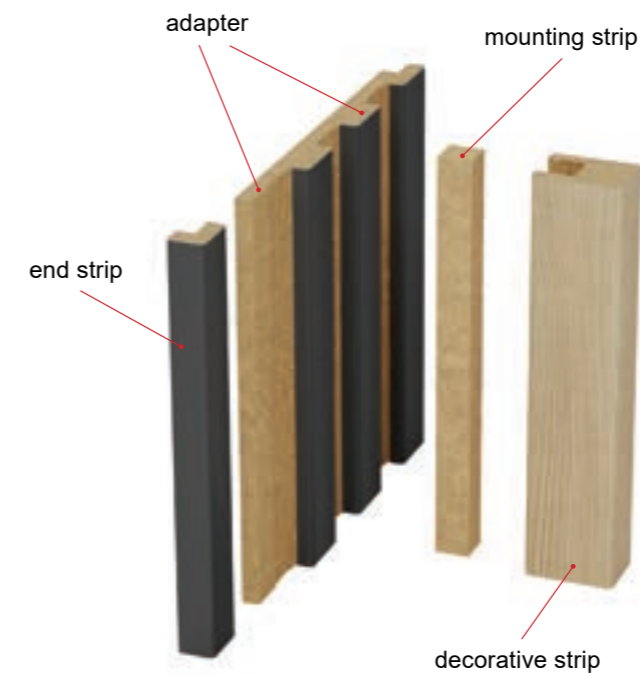


ASSEMBLED DECORATIVE PANEL



panel sizes

- adapter - length 2750mm
- decorative strip and mounting strip - length 2750mm
- end strip - length 2750mm

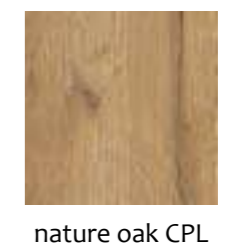


PLEASE NOTE

Other decorative strip and adapter colours are available by special order. For the full range of decorative strip and adapter colours please refer to the Erkado brochure / website www.erkado.pl.

AVAILABLE COLOURS

DECORATIVE STRIP



ADAPTER



NEW MODELS



Erkado is a Polish family-run door manufacturing business that has been in operation since 1976. With an annual production volume of almost 750000 doors Erkado supplies not only the domestic market in Poland for interior and exterior doors but is also catering for an ever expanding export market for its products in over 16 countries worldwide.

Innovative design, high quality materials, the latest manufacturing techniques and an almost obsessive commitment to quality control are the hallmarks and guiding principles of this premium but affordable range of contemporary design doors.

Due to the popularity of our Erkado door range we've decided to add 6 new models in mist grey – **HARBOUR** and **HAVEN** models are available in solid and glass variants.

Using ecologically friendly materials and available in a choice of contemporary colours - white, grey, cream etc - these doors represent a modern and environmentally conscious choice and very much in keeping with the customer's expectation that the product should be functional, attractive and minimally impactful in terms of our global natural resources.

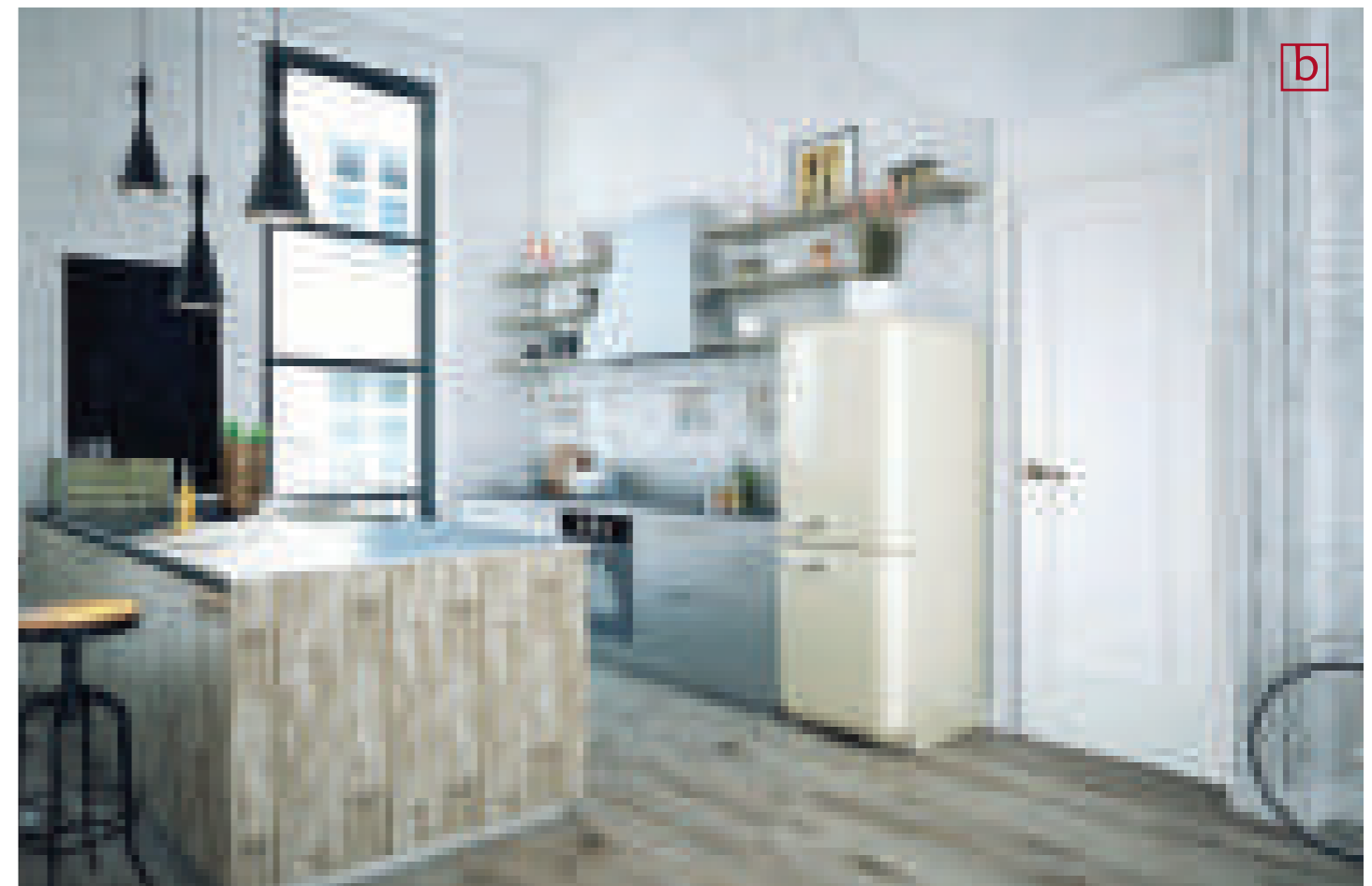
ERKADO

range

 ERKADO

www.dorasdoors.com

midnight grey / winter white / mist grey



ERKADO

- a - Harbour laminate mist grey (obscure glass). **NEW**
- b - Winter white 1 panel
- c - Midnight grey 1 panel
- d - Haven laminate mist grey 3 panel. **NEW**



a - Haven laminate mist grey
(obscure glass). **NEW**
b - Haven laminate mist grey
(moulding detail). **NEW**



We are excited to introduce a new suite of doors in the Erkado range. Models **HAVEN** and **HARBOUR** have a stile and rail construction and are finished in a premium laminate facing. The highly authentic looking grain pattern is complemented perfectly by the mist grey colour choice for these models.

Super hard-wearing, scratch resistant and simple to clean, the doors in this range offer beauty, durability and practicality.

quick spec

44mm thickness
manufactured with solid engineered timber for greater stability
with laminated HDF facings offering a very durable surface
wrapped with high quality CPL which is remarkably strong and resistant to scratching and UV fading
traditionally constructed stile and rail doors
fully finished edges
4mm toughened glass EN12150
internal use only

door sizes

78 X 24
78 X 26
78 X 28
78 X 30
80 X 32
80 X 34

NEW

NEW

NEW

NEW

NEW

NEW



haven laminate
mist grey
clear glass



haven laminate
mist grey
3 panel



haven laminate
mist grey
obscure glass



harbour laminate
mist grey
clear glass



harbour laminate
mist grey



harbour laminate
mist grey
obscure glass

ERKADO



a - Midnight grey 1 lite obscure glass (moulding detail)
 b - Winter white 1 lite (clear glass)

quick spec

door sizes

textured premium laminate facing	78 X 24
44mm thickness	78 X 26
fully finished edges	78 X 28
16mm panel	78 X 30
unique Homalight core for stability	80 X 32
38mm solid timber perimeter lipping	80 X 34
4mm toughened glass EN12150	
internal use only	

please note

Doras Distributors is proud to be the sole agent for Erkado products in the Republic of Ireland.

For double doors a T-lipping must be used.

Rebating a door will invalidate the guarantee and should not be done.

skirting & architrave options



For further information on skirting and architrave options please refer to the moulding section on pages 132-141.

handle options



For further information on handle options please refer to the door handles section on pages 122-131.



midnight grey
1 lite
clear glass



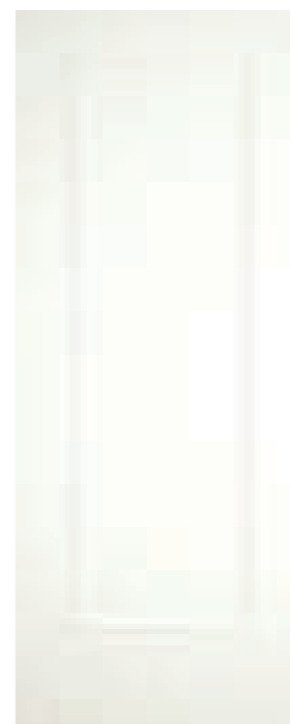
midnight grey
1 panel



midnight grey
1 lite
obscure glass



winter white
1 lite
clear glass



winter white
1 panel



winter white
1 lite
obscure glass



NEW MODELS



We are proud to introduce our new addition to the Proma range - **TACTO** - which offers a suite of premium textured vinyl veneered doors by renowned Spanish door manufacturer Puertas Proma.

The doors feature an elegant opposing veneer aesthetic with a vertical orientation on the stiles and a horizontal in between – an essential choice for anyone seeking a cool and stylish contemporary look in their home.

All Proma doors are superbly engineered using real wood lipping, real wood mouldings, top grade wood veneers and textured laminates over a solid core. The doors are produced individually with perfectly engineered parts and are painstakingly assembled by hand with all the veneers being selected by professionals. Also, every single component is checked for all aspects of quality at each stage of the manufacturing process with each door receiving an exhaustive final inspection and cosmetic buffing over.

PROMA

range





a

NEW



b

NEW



c



d

- a - Model Tacto 7301 desert beige. **NEW**
- b - Model Tacto 7301 glacier grey. **NEW**
- c - Model Tacto 7300 glacier grey
- d - Model Tacto 7300 basalt grey

PLEASE NOTE

New Tacto range is available ex-stock.
 Glass models come unglazed but clear/obscure glass is an option.
 Solid models have fd30 rating.



a - Model Tacto 7300 desert beige
 b - Model Tacto 7301 glacier grey. **NEW**

quick spec

solid particleboard core with minimum density of 560 kg/m³
 45mm thickness
 side lipping in solid timber with vinylacetate adhesive D-3
 veneered in vinyl of prime quality of 0.6 mm thickness
 edge-banded on wholeperimeter in PVC glued with
 PUR D-4 adhesive
 glass models - glazing optional
 internal use only

door sizes

- 78 X 24
- 78 X 26
- 78 X 28
- 78 X 30
- 80 X 32
- 80 X 34

please note

All Tacto models are available ex-stock now. Glass models come unglazed but could be supplied with clear/obscure glass as an option. Solid models have fd30 rating.

Off-standard sizes are also available.

skirting & architrave options



For further information on skirting and architrave options please refer to the moulding section on pages 132-141.

NEW

NEW



Tacto 7300 fd30
desert beige



Tacto 7301
desert beige
unglazed



Tacto 7300 fd30
glacier grey



Tacto 7301
glacier grey
unglazed



Tacto 7300 fd30
basalt grey



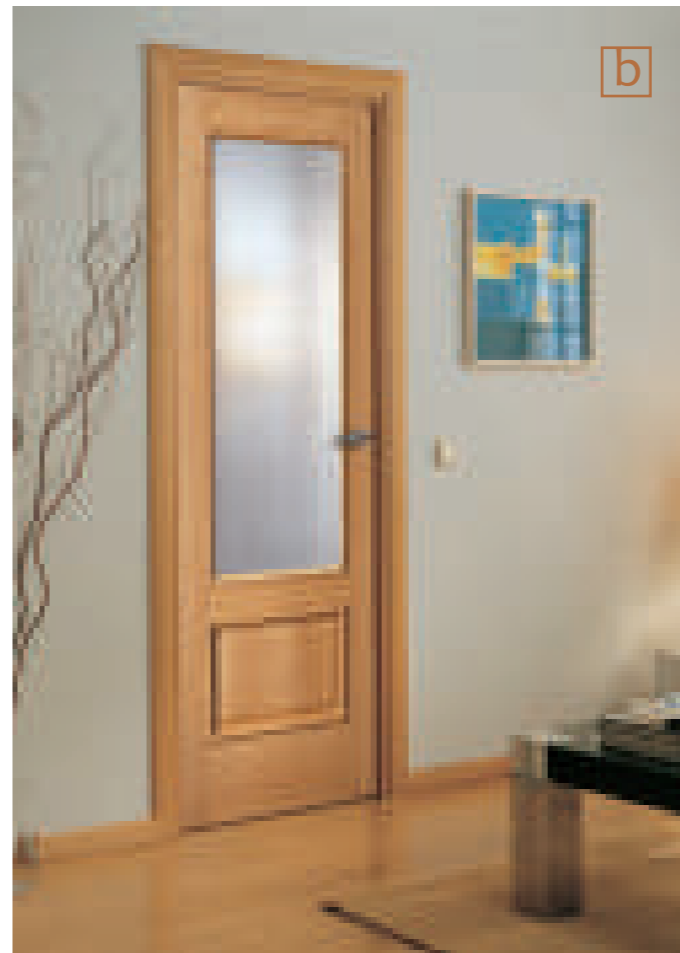
Tacto 7301
basalt grey
unglazed





a - Model 212 rlv oak (raised panel)
 b - Model 214 rlv oak (clear glass)

PLEASE NOTE
 All Proma oak models shown in the brochure are not standard stock items. Available by special order only.



quick spec	door sizes
HD engineered core	
40mm thickness	78 X 24
0.6mm veneer facing	78 X 26
20mm solid perimeter lipping	78 X 28
reducible by 12mm per side	78 X 30
glass models - preglazed	80 X 32
bookmatched veneers on rails and stiles	80 X 34
high quality factory lacquer	
internal use only	

please note

All doors on these pages are supplied with a superior quality factory lacquer and glass ope models are preglazed.

For double doors a T-lipping must be used.

Rebating a door will invalidate the guarantee and should not be done.

skirting & architrave options

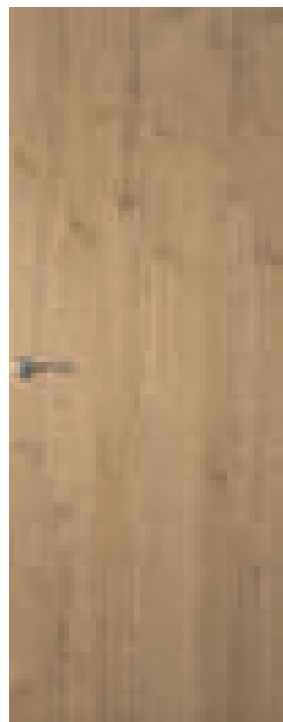
SAM WRAP Chamfered SAM ZERO Ogee SAM WRAP Ogee

For further information on skirting and architrave options please refer to the moulding section on pages 132-141.

handle options

Venice PCSN Florence SN Siena SN

For further information on handle options please refer to the door handles section on pages 122-131.



8600
rustic oak



2040 rlv 2v
oak
clear bevelled glass



2040 rlv
oak



2060 rlv
oak



214 rlv
oak
clear glass



212 rlv
oak



Belgravia range showcases a modern look which is all about maximising the light in any given space by virtue of its thinner stile and rail dimensions.

Innovative and original, these doors represent a refreshing departure from the more conventional door designs that have become common-place in recent years.

Available in pure white and solid black, this range is ideal for someone who is unafraid of making a bolder statement when it comes to interior design.

Clear glass only. Paint finish is premium primed.

A complementary range of mouldings is now also available to provide the necessary finishing touch. Please see pages 132-141.

BELGRAVIA

range

white / black



a



b



c



d

- a - Mayfair (clear glass)
- b - Kensington (clear glass)
- c - Mayfair (moulding and panel detail)
- d - Mayfair (clear glass)

a - Kensington (moulding and panel detail)
 b - Mayfair



a



b

quick spec

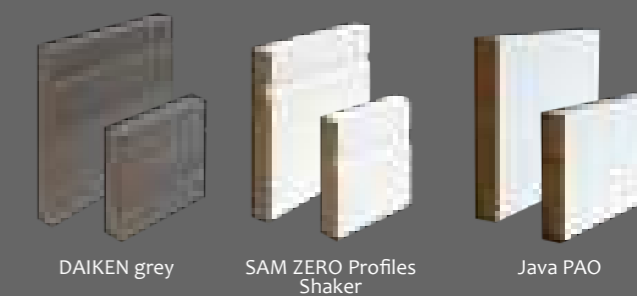
door sizes

44mm thickness	78 X 24
timber narrow profile stiles and rails	78 X 26
9mm MDF panels (solid doors)	78 X 28
factory premium primed in white (RAL 9003) or black (RAL9005)	78 X 30
glass models - preglazed	80 X 32
5mm clear toughened glass (EN12150)	80 X 34
internal use only	

please note

For double doors a T-lipping must be used.
 Rebating a door will invalidate the guarantee and should not be done.

skirting & architrave options

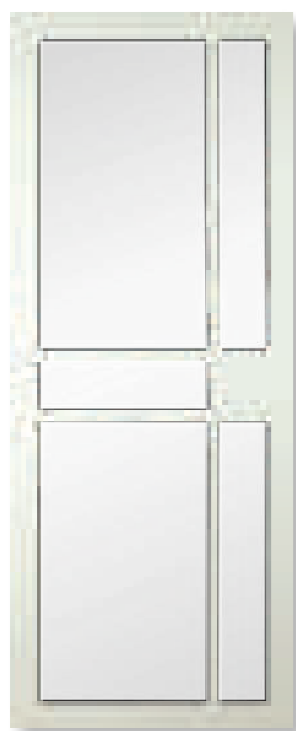


For further information on skirting and architrave options please refer to the moulding section on pages 132-141.

handle options



For further information on handle options please refer to the door handles section on pages 122-131.



kensington
clear glass



kensington



mayfair
clear glass



mayfair



PHOTO: Model Bergerac white 3 panel.

The elegant design of the Renaissance door range is characterised by a beautiful triple-step panel treatment which is quite different from most other door designs currently on the market.

Available in 1 panel and 3 panel configurations, this is a selection of doors which is sure to lend a degree of grandeur to your interior space.

Available in white and silk grey premium primed paint finishes.

Glass ope models in opal laminate and clear come preglazed with EN 12150 compliant safety glass.

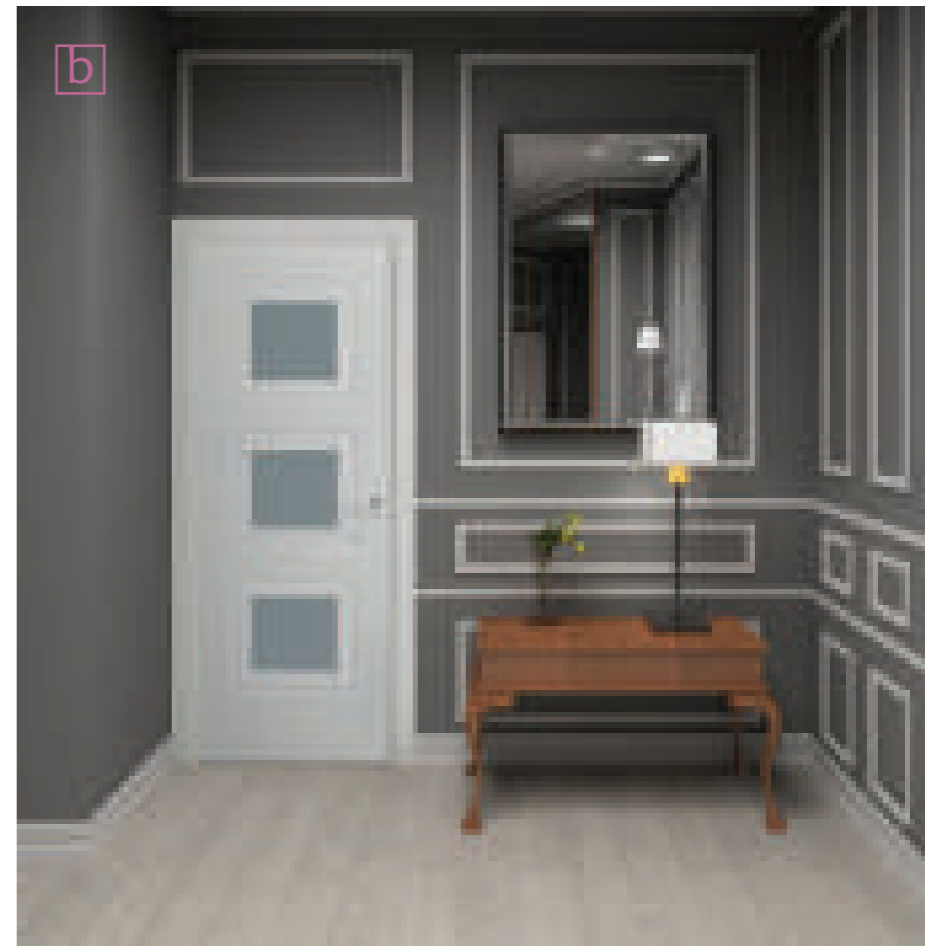
A complementary range of mouldings is now also available to provide the necessary finishing touch. Please see pages 132-141.

RENAISSANCE

range



a



b

- a - Versailles 1 panel
- b - Bergerac white 3 lite
(opal laminate glass)
- c - Bergerac silk grey 3 lite
(clear glass)
- d - Versailles 1 lite (opal
laminate glass)



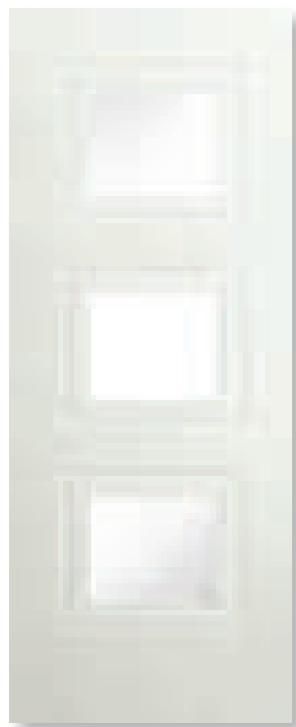
c



d



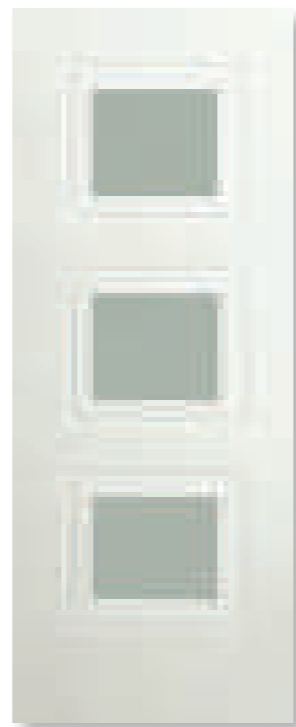
- a - Versailles 1 lite clear glass (moulding detail)
- b - Versailles 1 lite (opal laminate glass)
- c - Bergerac white 3 panel



bergerac white
3 lite
clear glass



bergerac white
3 panel



bergerac white
3 lite
opal laminate glass



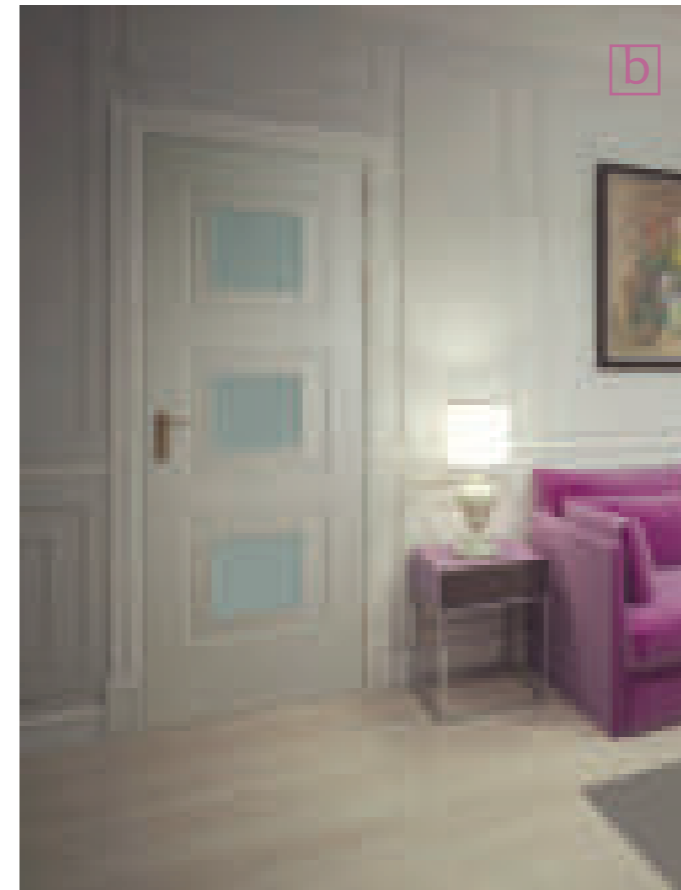
versailles
1 lite
clear glass



versailles
1 panel



versailles
1 lite
opal laminate glass



quick spec

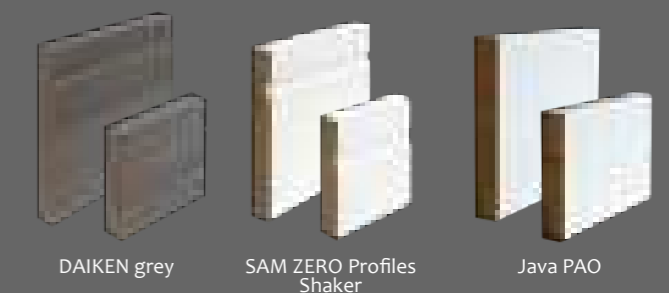
door sizes

HDF faced premium primed	78 X 24
44mm thickness	78 X 26
10mm solid wood lipping	78 X 28
premium primed in white (RAL 9003)	78 X 30
or silk grey (RAL 7044)	80 X 32
glass models - preglazed	80 X 34
5mm toughened glass (EN 12150)	
internal use only	

please note

For double doors a T-lipping must be used.
 Rebating a door will invalidate the guarantee and should not be done.

skirting & architrave options



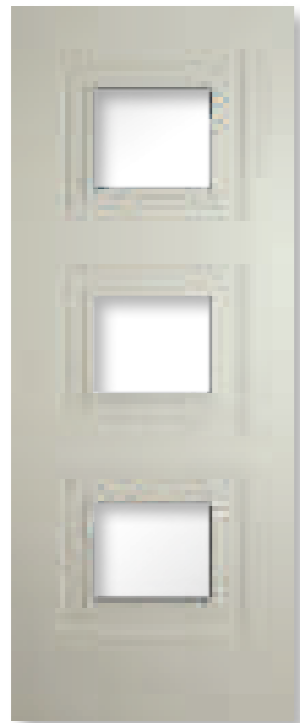
For further information on skirting and architrave options please refer to the moulding section on pages 132-141.

handle options



For further information on handle options please refer to the door handles section on pages 122-131

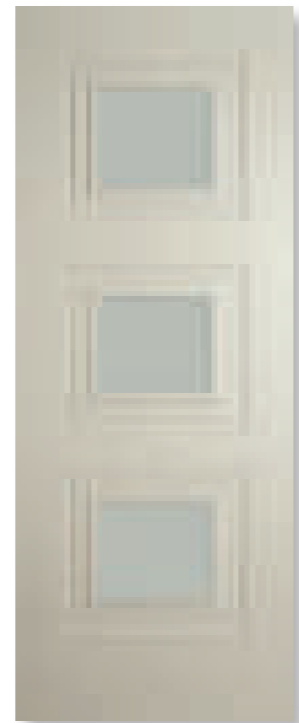
a - Bergerac silk grey 3 panel
 b - Bergerac silk grey 3 lite (opal laminate glass)



bergerac silk grey
 3 lite
 clear glass



bergerac silk grey
 3 panel



bergerac silk grey
 3 lite
 opal laminate glass

NEW MODELS



European range creates a unique, distinctive and highly personal interior for your home. It has already proven to be a hot favourite among our clients. Pure White, outstanding Matt Black and sophisticated Silk Grey door models stand out for their elegance of contemporary design and beautiful craftsmanship.

That is why we decided to expand the range with the addition of MILAN model which is available unglazed and also in solid and glass variants.

Glazed models come in a choice of clear glass with a 25mm bevel or a quality obscure opal laminate glass providing extra privacy if required.*

A complementary range of mouldings is now also available to provide the necessary finishing touch. Please see pages 132-141.

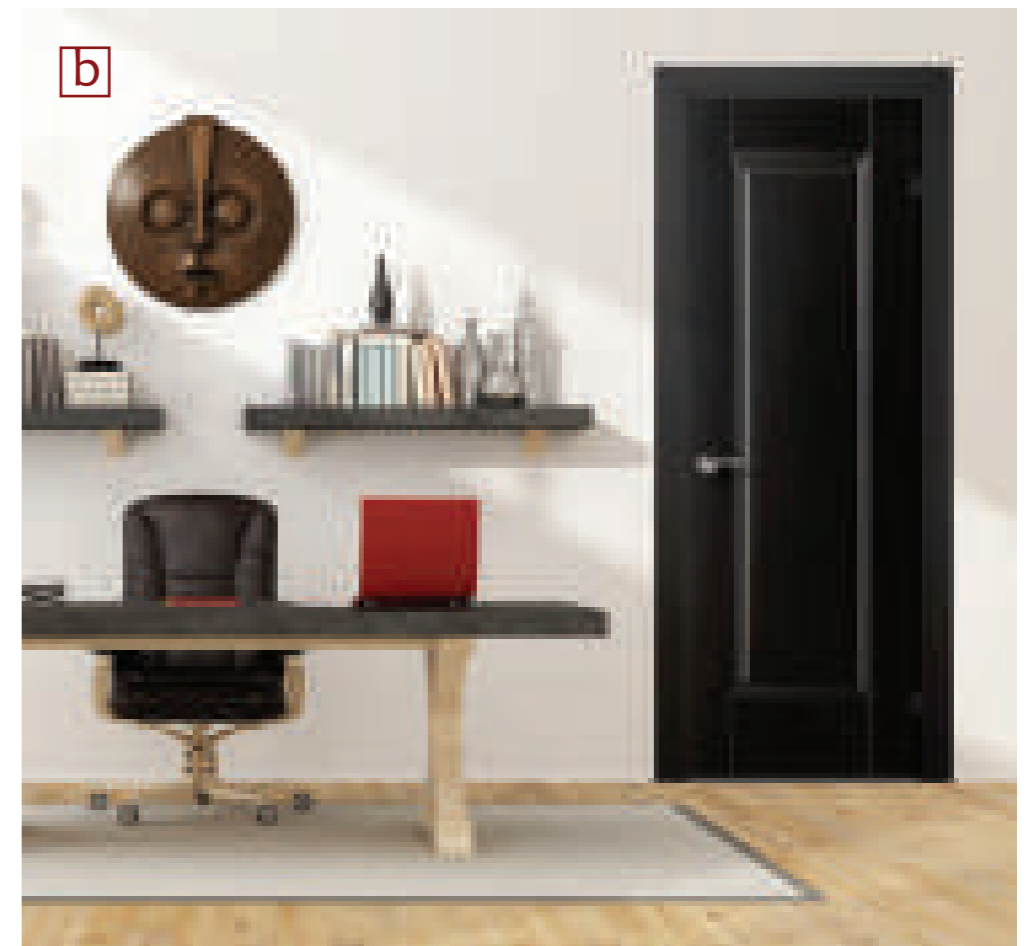
**excluding Eindhoven model*

EUROPEAN range



a

NEW



b

- a - Milan 2 panel. **NEW**
- b - Amsterdam black 1 panel
- c - Amsterdam black 1 lite
(opal laminate glass)
- d - Arnhem white 2 panel



c



d

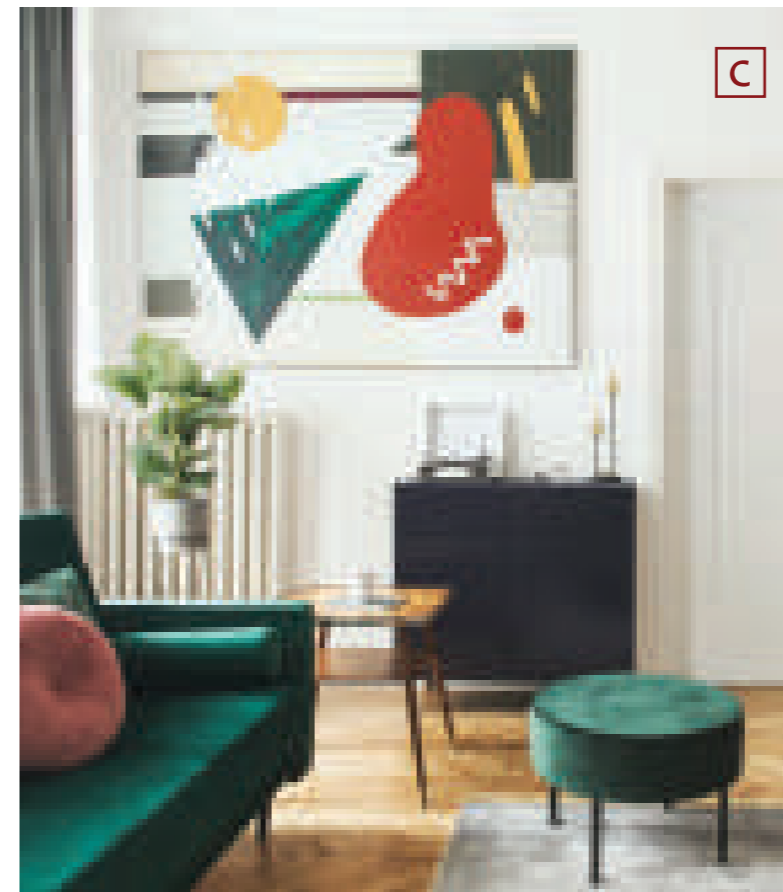
- a - Milan 2 panel (moulding detail). **NEW**
- b - Milan 2 panel. **NEW**
- c - Amsterdam white 1 panel
- d - Amsterdam white 1 lite
(opal laminate glass)



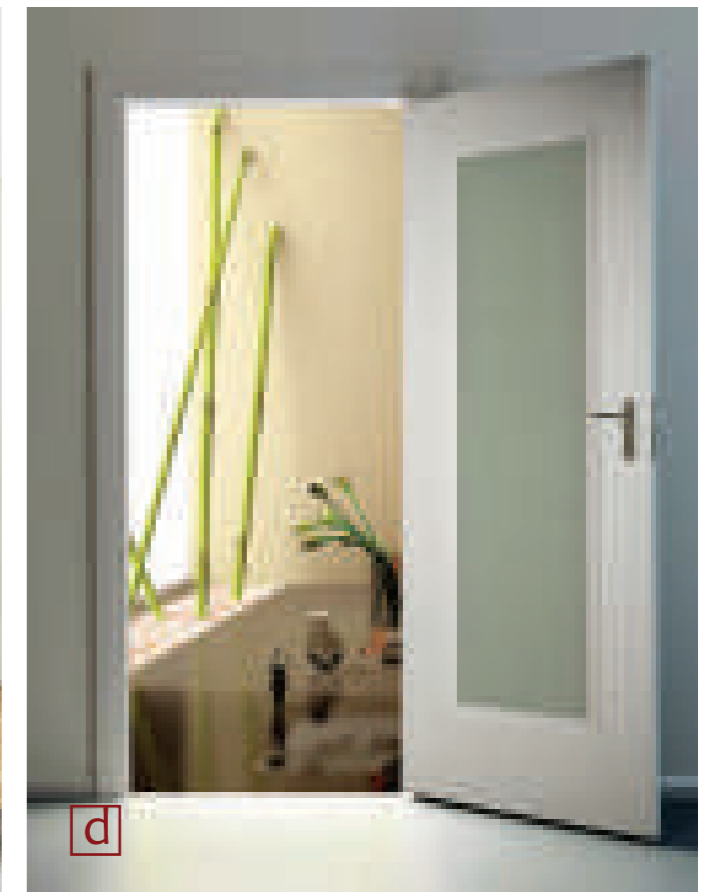
a



b



c



d

NEW

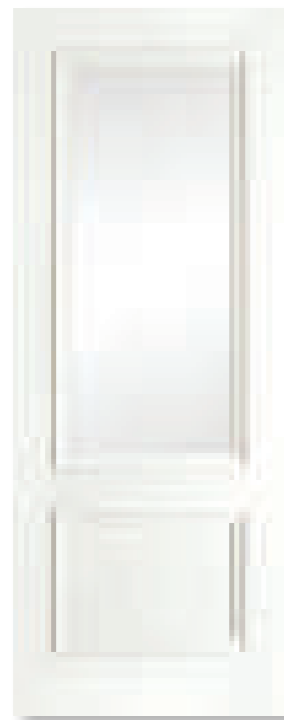
NEW

NEW

NEW



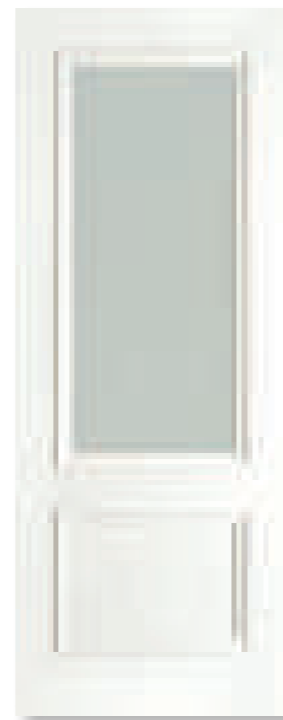
milan
1p 1 lite
no glass



milan
1p 1 lite
clear glass



milan
2 panel



milan
1p 1 lite
opal laminate glass



amsterdam white
1 lite
clear bevelled glass



amsterdam white
1 panel



amsterdam white
1 lite
opal laminate glass



- a - Eindhoven 1 panel
- b - Eindhoven 1 lite frosted glass (glass detail with 3cm clear glass perimeter)
- c - Arnhem white 2 panel (moulding detail)
- d - Arnhem white 1 panel 1 lite (opal laminate glass)



eindhoven
1 lite
clear glass



eindhoven
1 panel



eindhoven
1 lite
frosted glass



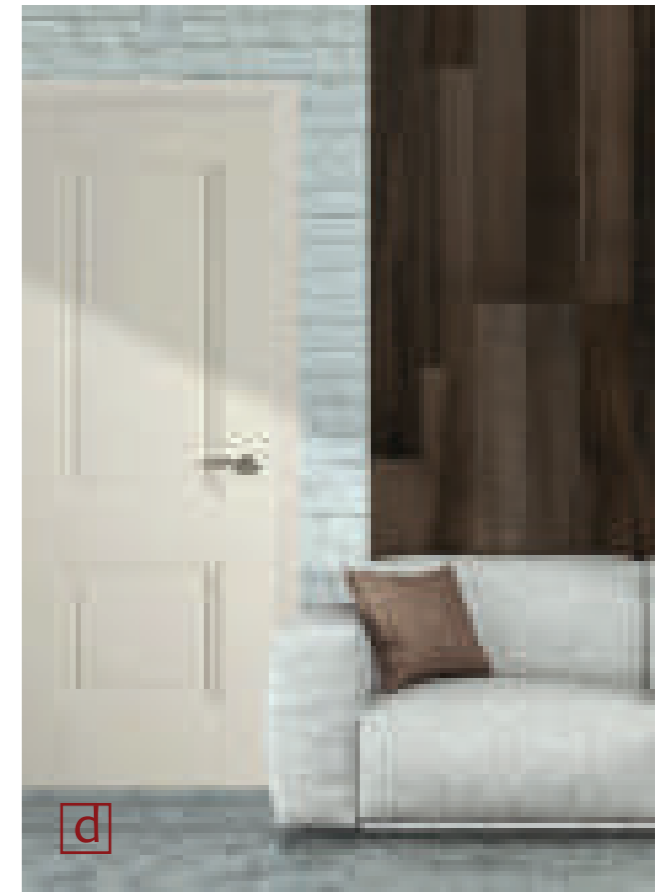
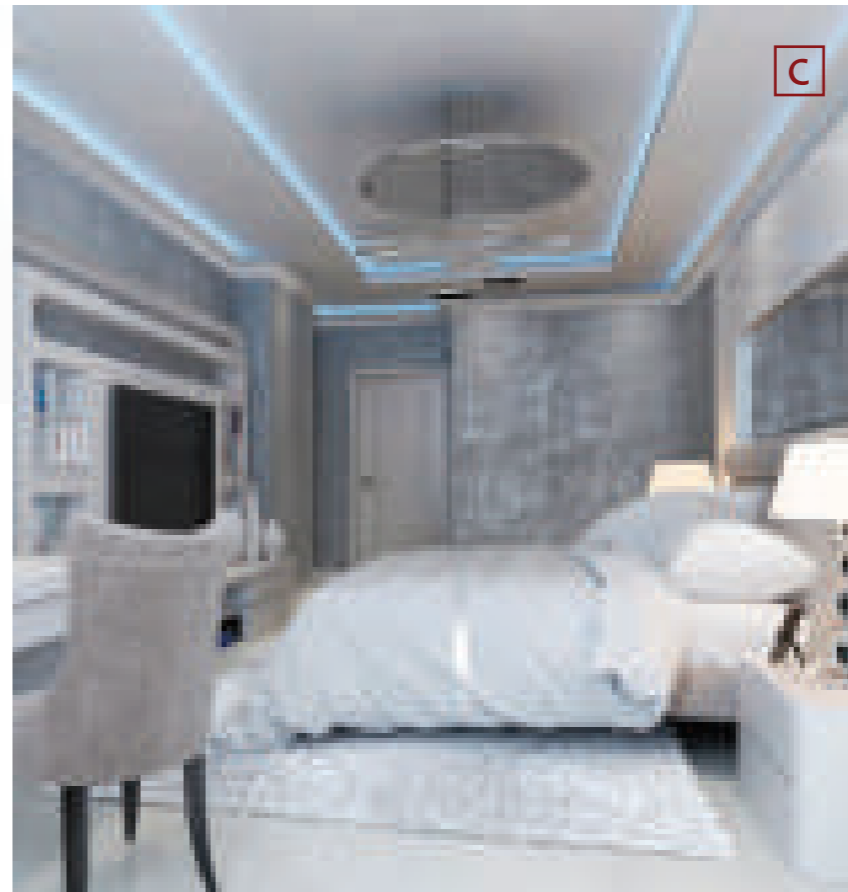
arnhem white
1p 1 lite
clear bevelled glass



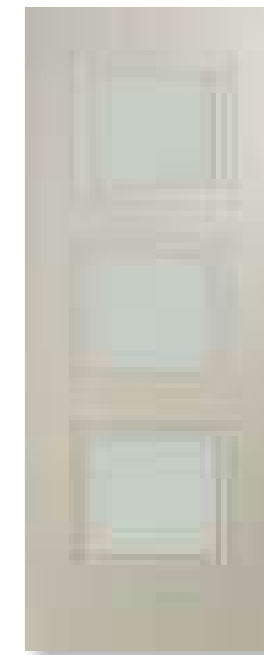
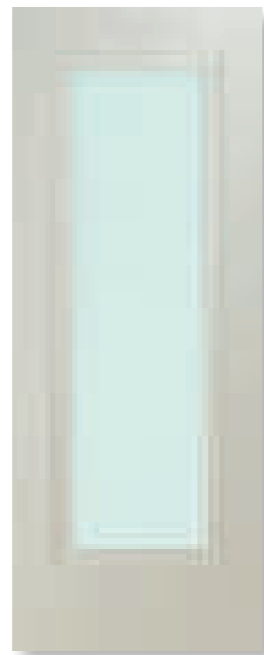
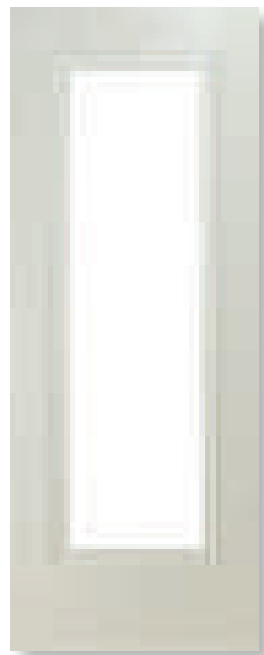
arnhem white
2 panel



arnhem white
1p 1 lite
opal laminate glass



a - Vienna silk grey 3 panel
 b - Prague silk grey 1 panel
 (moulding and panel detail)
 c - Prague silk grey 1 panel
 d - Salzburg silk grey 2 panel



prague silk grey
 1 lite
 clear bevelled glass

prague silk grey
 1 panel

prague silk grey
 1 lite
 opal laminate glass

salzburg silk grey
 1p 1 lite
 clear bevelled glass

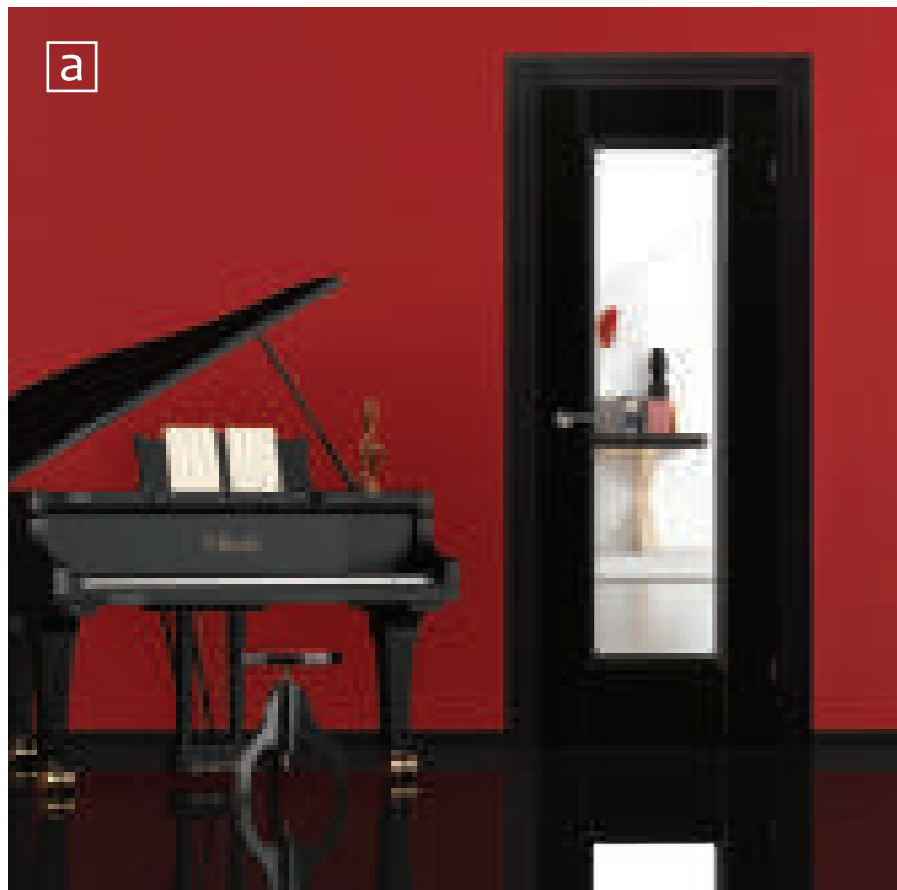
salzburg silk grey
 2 panel

salzburg silk grey
 1p 1 lite
 opal laminate glass

vienna silk grey
 3 lite
 clear bevelled glass

vienna silk grey
 3 panel

vienna silk grey
 3 lite
 opal laminate glass



- a - Amsterdam black 1 lite
(clear bevelled glass)
- b - Amsterdam black 1 panel
(moulding detail)
- c - Arnhem black 1p 1 lite
(clear bevelled glass) & 2 panel

quick spec

44mm thickness
 particle board core
 10mm solid wood lipping
 reducible by 3mm per side
 dowelled construction
 extra wide stiles and rails
 glass models - preglazed
 5mm toughened clear glass / clear bevelled glass / opal laminate glass
 factory premium primed in white (RAL 9003), black (RAL 9005) or silk grey (RAL 7044)
 internal use only

door sizes

78 X 24
 78 X 26
 78 X 28
 78 X 30
 80 X 32
 80 X 34

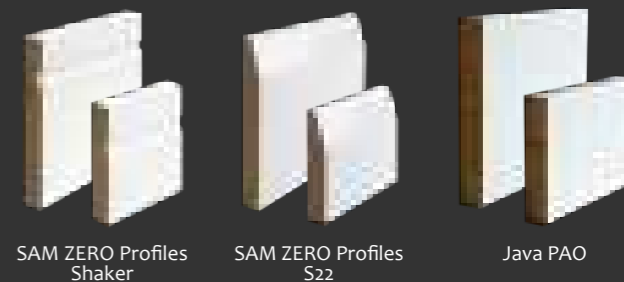
please note

For double doors a T-lipping must be used.

Rebating a door will invalidate the guarantee and should not be done.

Model Eindhoven 1 lite frosted glass (p48) features 3cm clear glass perimeter.

skirting & architrave options



For further information on skirting and architrave options please refer to the moulding section on pages 132-141.

handle options



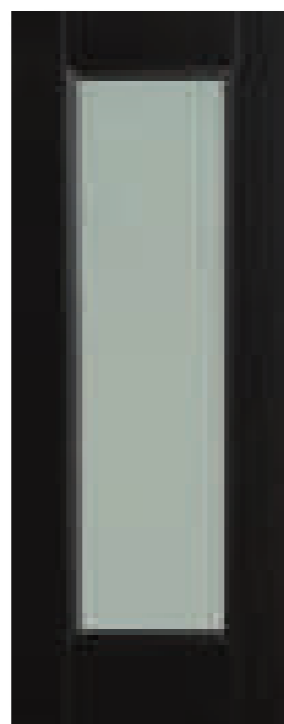
For further information on handle options please refer to the handle section on pages 122-131.



amsterdam black
1 lite
clear bevelled glass



amsterdam black
1 panel



amsterdam black
1 lite
opal laminate glass



arnhem black
1p 1 lite
clear bevelled glass



arnhem black
2 panel



arnhem black
1p 1 lite
opal laminate glass

NEW MODELS



This innovative range combines the classical proportions of a shaker door with cutting-edge technology and practicality.

Last year we added 3 new models in limed oak. This year it is the stunning **ECLIPSE** model that has caught our attention. This door stands out by virtue of the elegant crescent aperture giving it a novel and distinctive look.

Glazed models come in a choice of clear glass or a quality obscure opal laminate glass providing extra privacy if required.

A complementary range of mouldings in walnut and grey is now also available to provide the necessary finishing touch. Please see pp 132-141.

DAIKEN

shaker range

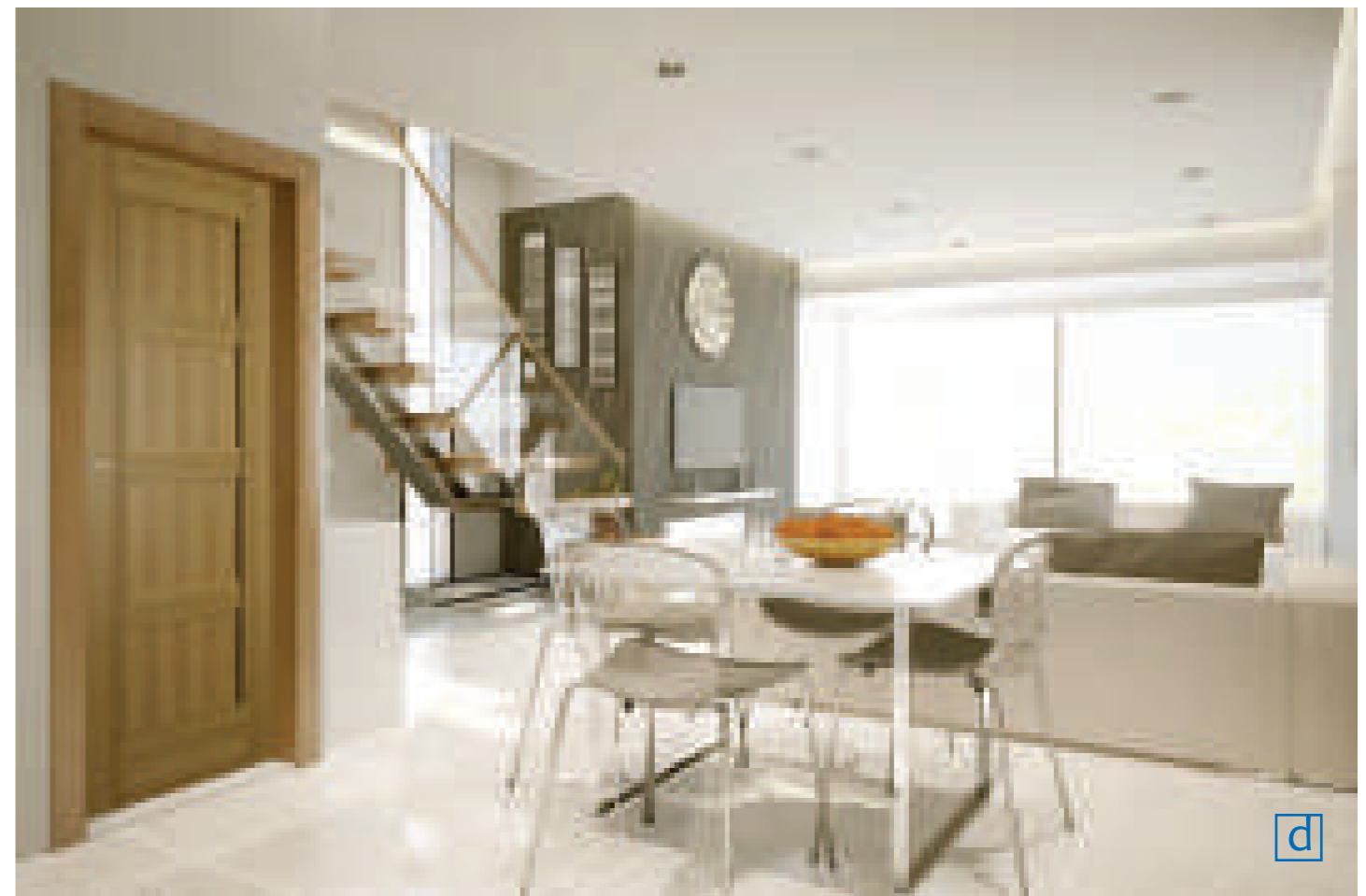
DAIKEN

www.dorasdoors.com

limed oak / walnut / grey

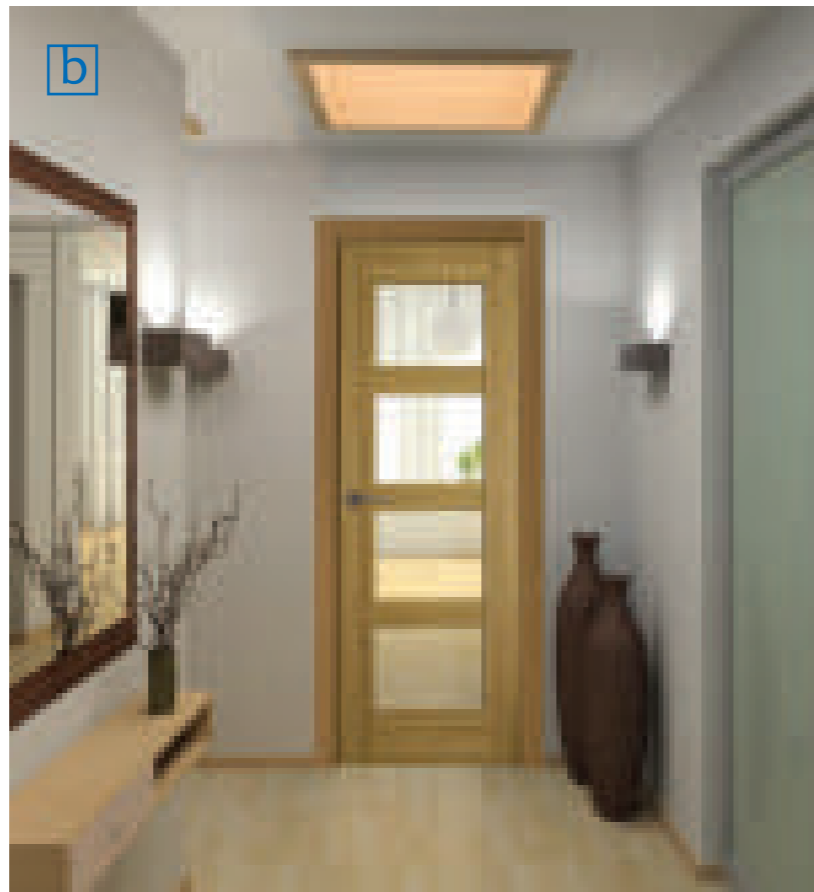


- a - Grey 4 lite (clear glass)
- b - Walnut 1 lite (clear glass)
- c - Grey 4p & 4 lite (opal laminate glass)
- d - Limed oak 4 panel

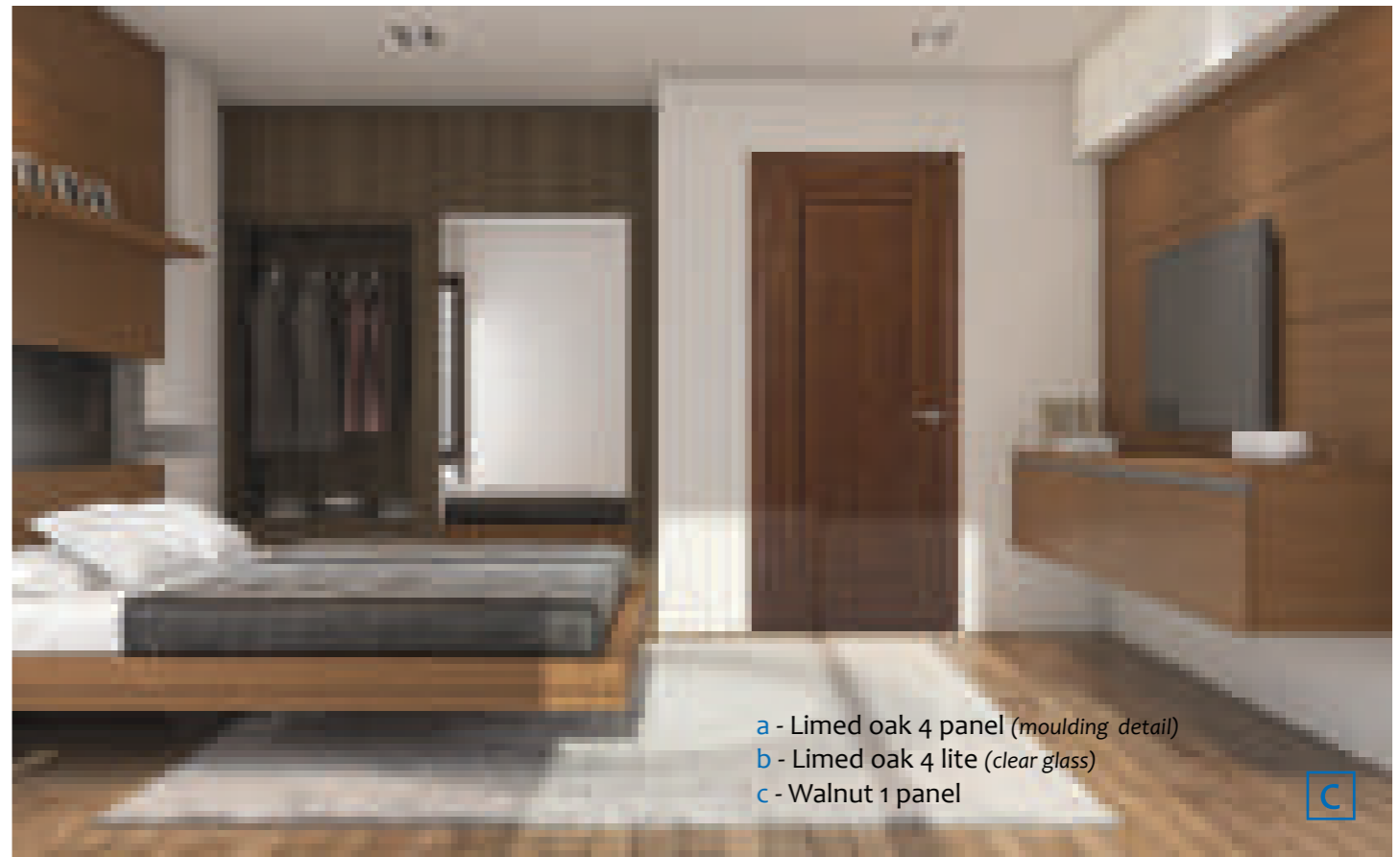




a



b



a - Limed oak 4 panel (moulding detail)
 b - Limed oak 4 lite (clear glass)
 c - Walnut 1 panel

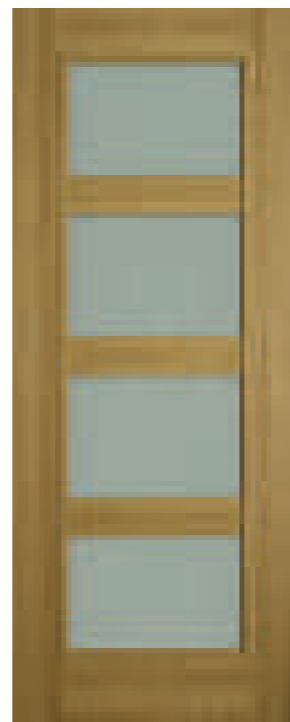
c



limed oak 4 lite
clear glass



limed oak 4 panel



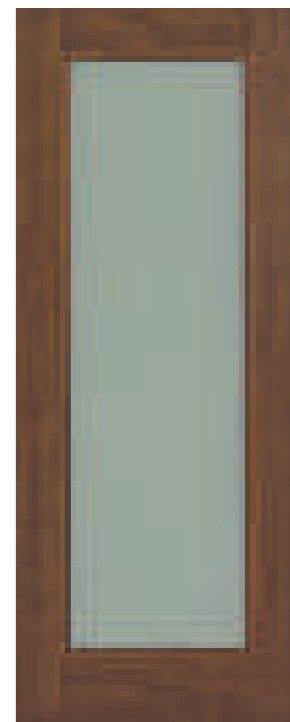
limed oak 4 lite
opal laminate glass



walnut 1 lite
clear glass



walnut 1 panel



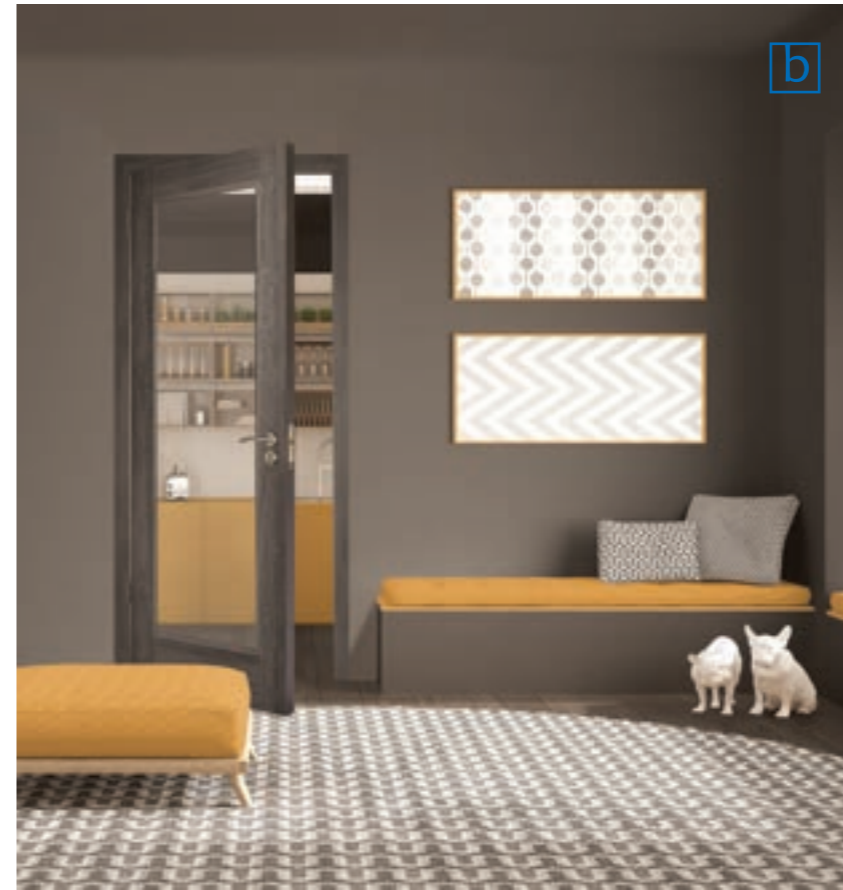
walnut 1 lite
opal laminate glass

a

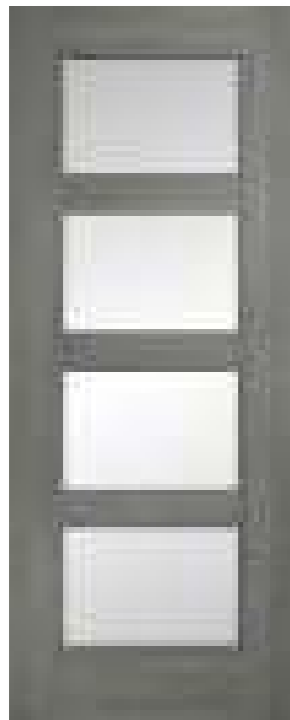
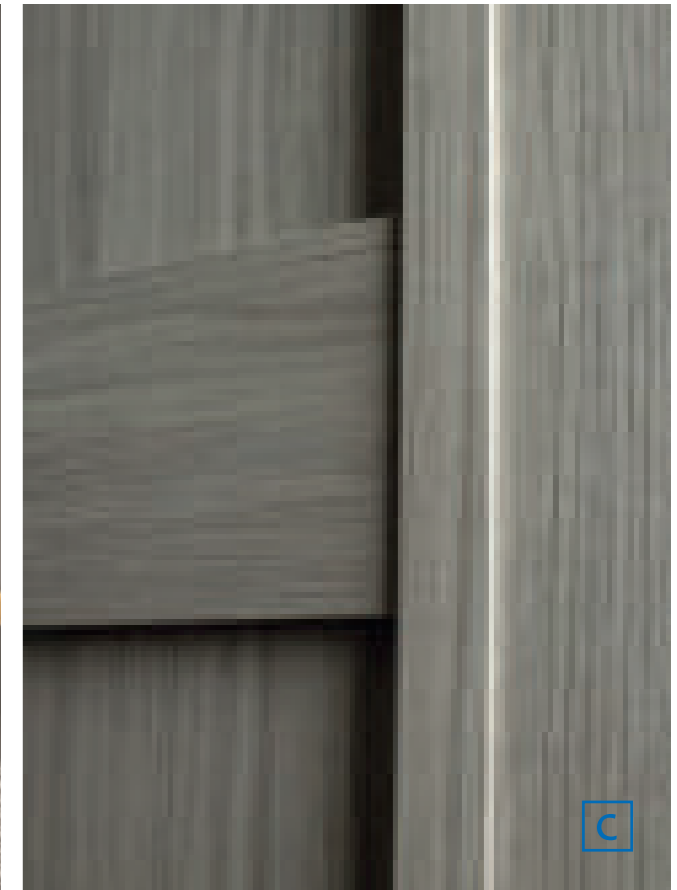
- a - Grey 4 lite (opal laminate glass)
- b - Grey 1 lite (clear glass)
- c - Grey 4 panel (flat panel detail)



b



c



grey 4 lite
clear glass



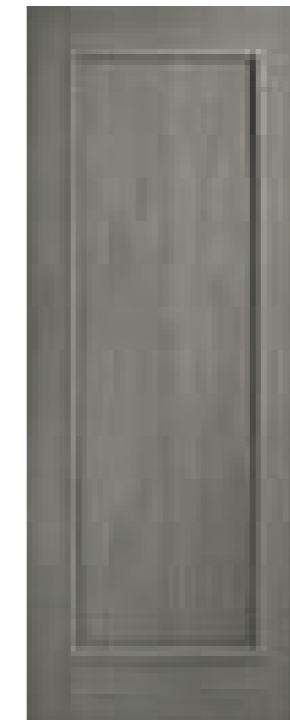
grey 4 panel



grey 4 lite
opal laminate glass



grey 1 lite
clear glass



grey 1 panel



grey 1 lite
opal laminate glass



quick spec	door sizes
<p>durable wood effect laminate facing</p> <p>44mm thickness</p> <p>painted 10mm solid hardwood edging</p> <p>reducible by 3mm per side</p> <p>dufaylite core</p> <p>glass models - preglazed</p> <p>5mm clear toughened glass (EN12150)</p> <p>internal use only</p>	<p>78 X 24</p> <p>78 X 26</p> <p>78 X 28</p> <p>78 X 30</p> <p>80 X 32</p> <p>80 X 34</p>

please note

For double doors a T-lipping must be used.

Rebating a door will invalidate the guarantee and should not be done.

skirting & architrave options



DAIKEN grey



SAM ZERO Profiles Shaker



DAIKEN walnut

For further information on skirting and architrave options please refer to the moulding section on pages 132-141.

handle options



Napoli SN



Verona PCSN



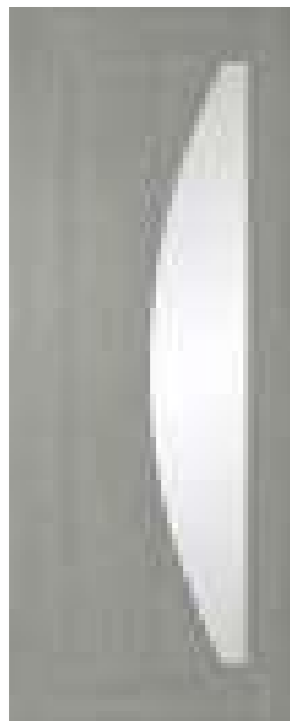
Genoa PC

For further information on handle options please refer to the door handles section on pages 122-131.

NEW

NEW

NEW



eclipse
clear glass



eclipse



eclipse
opal laminate glass

a - Eclipse grey (opal laminate glass). NEW
 b - Eclipse grey clear glass (moulding detail). NEW

DAIKEN

DAIKEN grey



A comprehensive range of traditional and contemporary door designs in white and oak manufactured and factory lacquered to a very high standard.

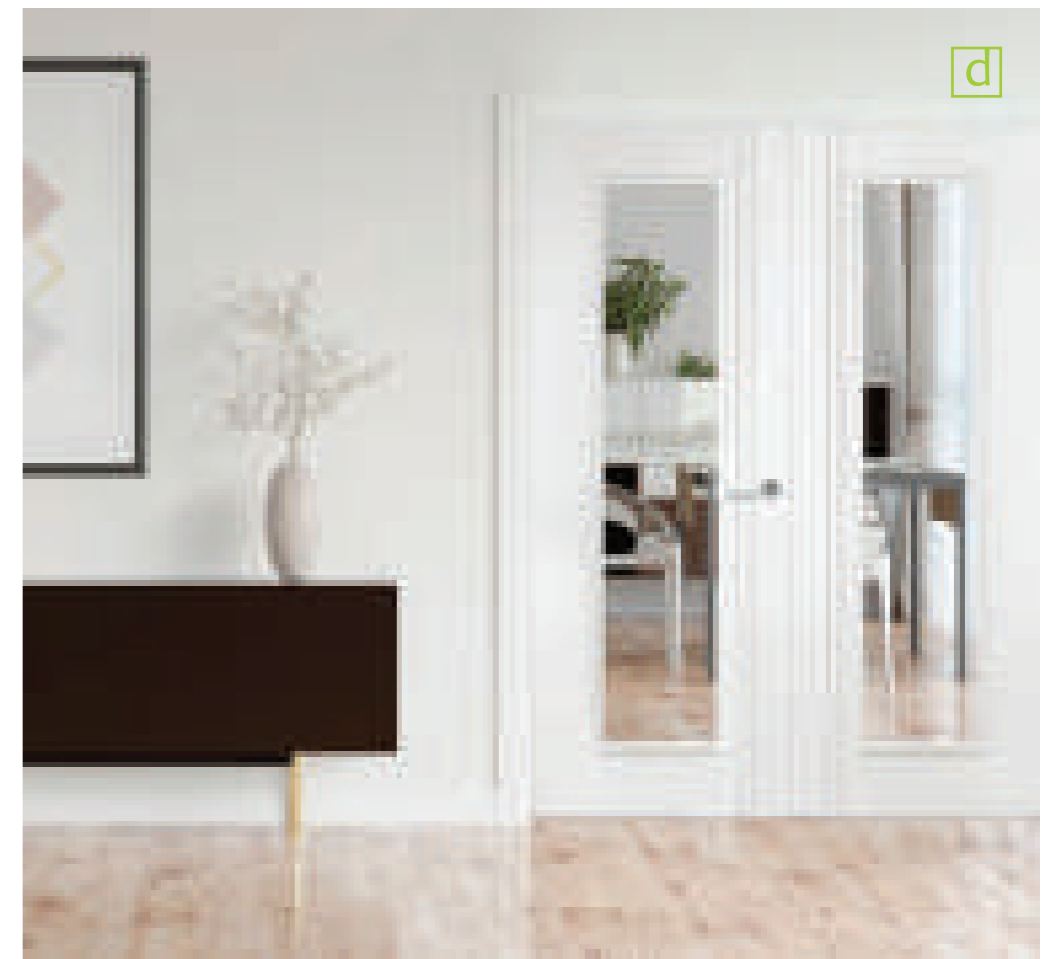
Stylish yet affordable Contract range brings quality and durability in a contemporary style to complement any home.

Glass ope models come preglazed with EN 12150 compliant safety glass.

A complementary range of mouldings in white and oak is also available to provide the necessary finishing touch. Please see pp 132-141.

CONTRACT

range



- a - Hydra (clear glass)
- b - Contract 1 panel
- c - Sheeted 4VG shaker
- d - Unicorn clear glass



a



b



c

- a - Unicor clear glass (groove detail)
- b - Hydra clear glass (groove detail)
- c - Centaur fd30
- d - Minotaur fd30



d

quick spec

	door sizes
MDF white facing	
44mm thickness	78 X 24
30mm solid pine frame construction	78 X 26
reducible by 3mm per side	78 X 28
glass models - preglazed	78 X 30
5mm clear toughened glass (EN12150)	80 X 32
factory premium primed in white (RAL 9003)	80 X 34
internal use only	

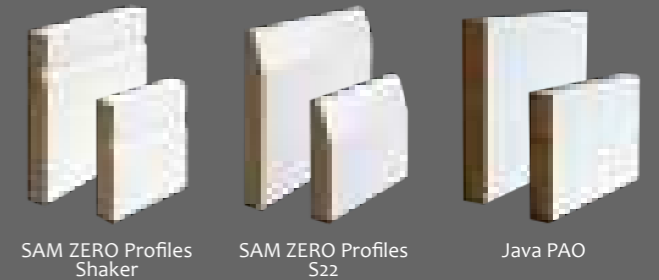
please note

Model *Pegasus 1 lite* features a beautiful 10mm Diamond V Cut glass treatment which continues the visual cue of the vertical panel grooves below.

For double doors a T-lipping must be used.

Rebating a door will invalidate the guarantee and should not be done.

skirting & architrave options



SAM ZERO Profiles Shaker

SAM ZERO Profiles S22

Java PAO

For further information on skirting and architrave options please refer to the moulding section on pages 132-141.

handle options



Napoli SN

Verona PCSN

Genoa PC

For further information on handle options please refer to the door handles section on pages 122-131.



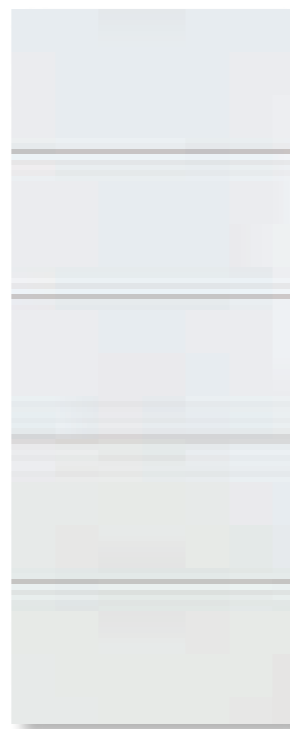
unicor
clear glass



minotaur fd30



hydra
clear glass



centaur fd30



pegasus 1 lite
clear glass



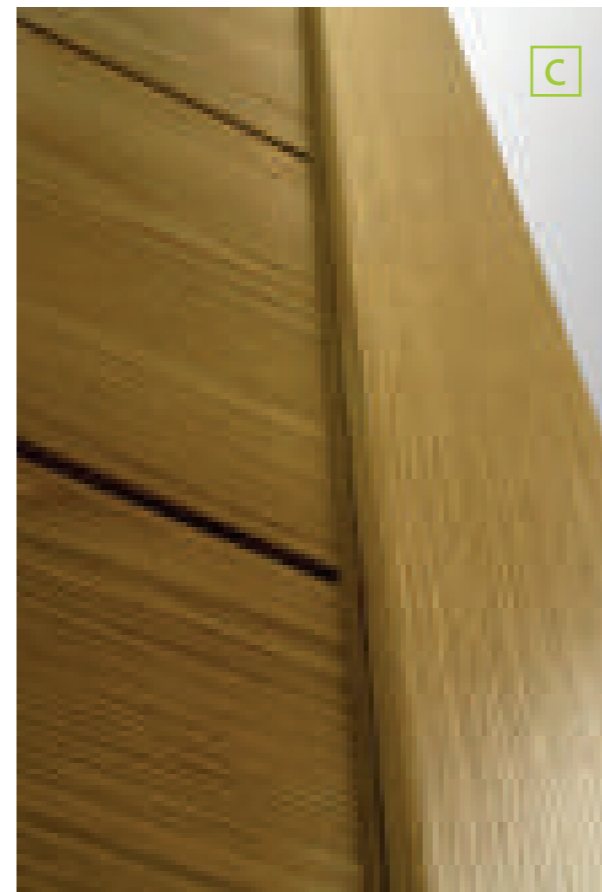
pegasus fd30



a - Contract 4 panel
 b - Contract 1 panel
 c - Sheeted 4HG shaker (groove detail)



b



c

quick spec

american white oak veneer
 44mm thickness
 particle board core
 10mm solid side lipping
 reducible by 3mm per side
 dowelled construction
 glass models - preglazed
 5mm clear toughened glass (EN12150)
 factory lacquer -120g per m²
 internal use only

door sizes

78 X 24
 78 X 26
 78 X 28
 78 X 30
 80 X 32
 80 X 34

please note

For information on how to clean frosted glass please refer to the maintenance section on page 145.

For double doors a T-lipping must be used.

Rebating a door will invalidate the guarantee and should not be done.

skirting & architrave options



SAM ZERO Profiles Shaker

SAM WRAP Chamfered

Java PAO

For further information on skirting and architrave options please refer to the moulding section on pages 132-141.

handle options



Napoli SN

Verona PCSN

Genoa PC

For further information on handle options please refer to the door handles section on pages 122-131.



contract 1 panel
clear glass



contract 1 panel



contract 1 panel
frosted glass



contract 2p 2 lite
clear glass



contract
4 panel



sheeted 4HG shaker
4 horizontal grooves



sheeted 4VG shaker
4 vertical grooves



Java range is a contemporary range of door designs manufactured to a high standard of quality and finish.

The freshness of brilliant white has become a very popular choice in recent years with people who wish to invigorate and revitalise their homes – Java White now broadens that choice.

Java Oak combines both modern and traditional style door models. The doors are manufactured using superior grade American white oak.

Glass ope models come pre-glazed with EN 12150 compliant safety glass.

Each oak model is factory finished with high quality clear lacquer. Torea, Nema and Bora models receive three coats - one base coat and two top coats to achieve that premium primed result.

JAVA

range

white / oak



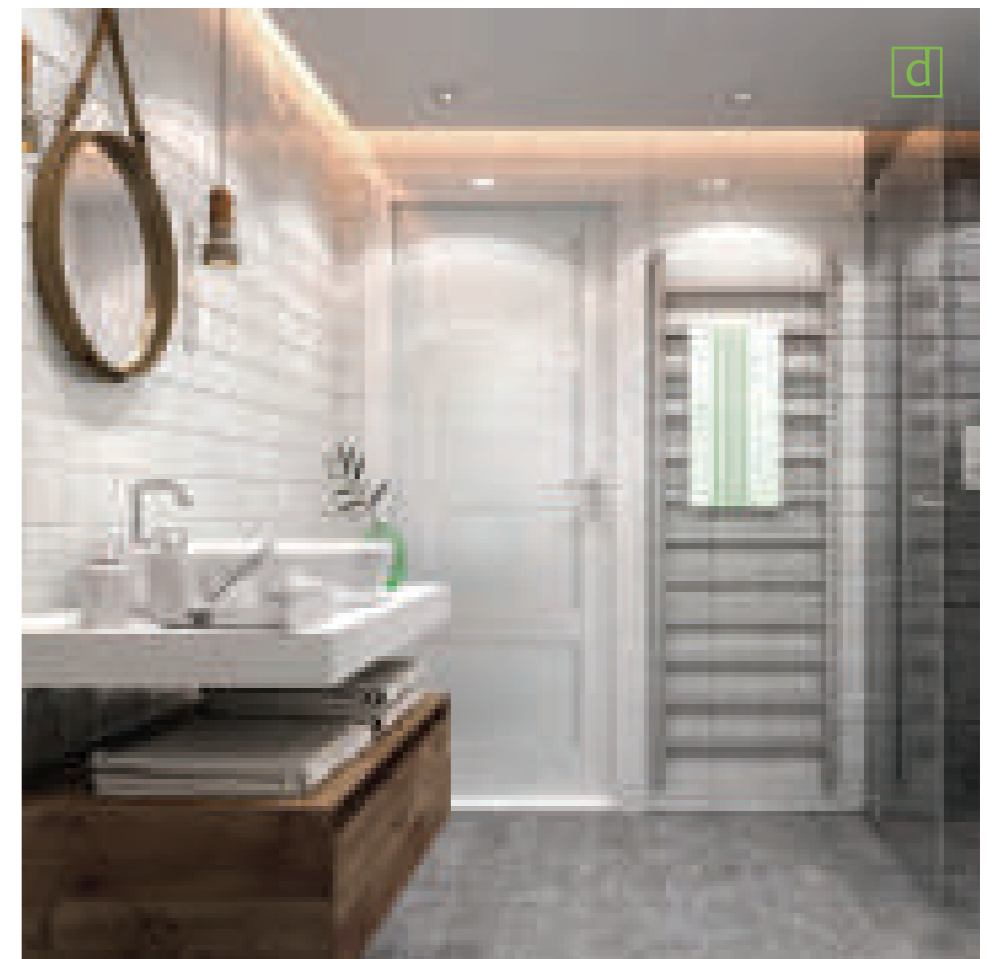
a



b



c



d

- a - Bora 9 lite premium primed (clear glass)
- b - Torea premium primed (clear glass)
- c - Mexicana
- d - Shaker 4 panel primed



a - Shaker 1 panel primed (available as fd30)
 b - Torea 4 lite premium primed (groove detail)
 b - Shaker 4 panel primed (panel detail)



quick spec

door sizes

44mm thickness	78 X 24
particle board core / light weight core	78 X 26
10mm solid side lipping	78 X 28
reducible by 3mm per side	78 X 30
dowelled construction	80 X 32
glass models - preglazed	80 X 34
5mm clear toughened glass (EN12150)	
factory premium primed in white (RAL 9003) except shaker 1p and 4p models which are primed internal use only	

please note

For information on how to clean frosted glass please refer to the maintenance section on page 145.

Models Torea 4 lite and Nema have a light weight core.

Models shaker 4p and 1p with glass options come primed.



shaker 4 lite primed clear glass



shaker 4 panel primed



shaker 4 lite primed frosted glass



bora 9 lite premium primed clear glass



shaker 1 lite primed clear glass



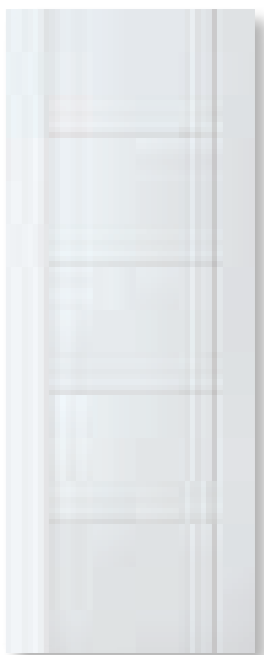
shaker 1 panel primed available as fd30



shaker 1 lite primed frosted glass



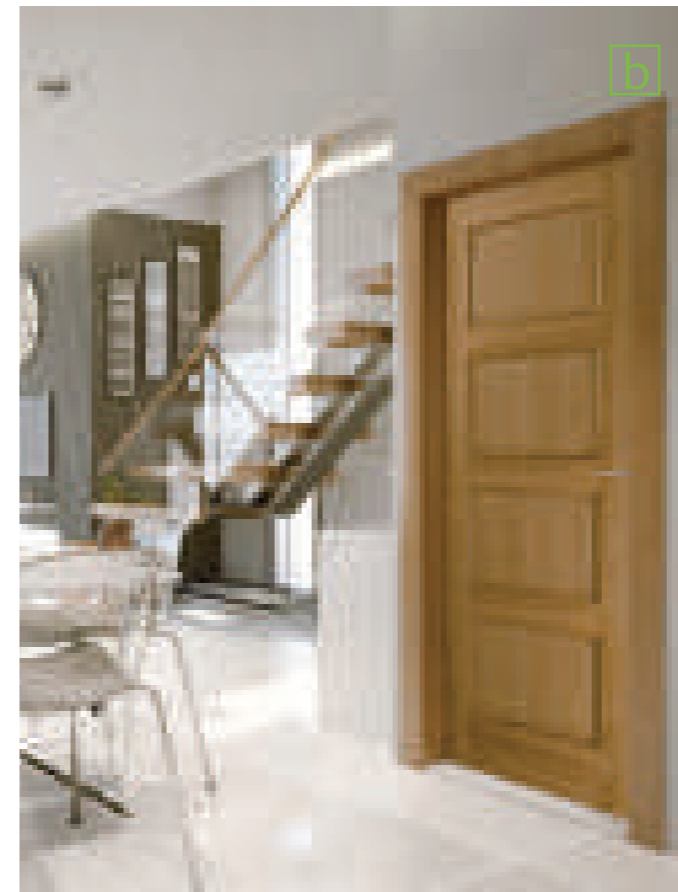
torea 4 lite premium primed clear glass



nema premium primed



a - Bali (frosted glass with 4 clear sections)
b - Lotus 4 panel*



quick spec

american white oak veneer
40mm thickness
10mm solid side lipping
reducible by 3mm per side
dowelled construction
glass models - preglazed
5mm toughened glass
factory lacquer -120g per m²
internal use only

door sizes

78 X 24
78 X 26
78 X 28
78 X 30
80 X 32
80 X 34

please note

Models *Bali* & *Lotus* have 44mm thickness.

Model *Mexicana 1 lite* features a 5mm clear toughened glass with 10mm Diamond V Cut.

For double doors a T-lipping must be used. Rebating a door will invalidate the guarantee and should not be done.

skirting & architrave options



For further information on skirting and architrave options please refer to the moulding section on pages 132-141.

handle options



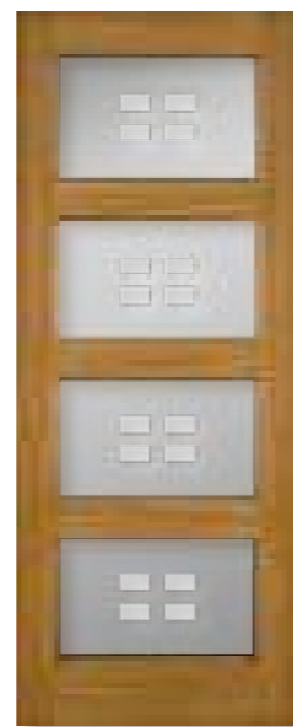
For further information on handle options please refer to the door handles section on pages 122-131.



mexicana 1 lite
clear glass



mexicana



bali 4 lite*
frosted glass with 4 clear sections



lotus 4 panel*

Models with * symbol are 44mm thick.



PHOTO: Model Victoria traditional 2 panel 2 lite (come unglazed).

Traditional white pays homage to vintage door design but with the benefits of modern production techniques. These doors feature flat panel design with decorative mould inserts.

An obvious choice for those who wish to capture a sense of antiquity for their home.

Victoria traditional 2 lite comes unglazed.

A complementary range of mouldings in white is also available to provide the necessary finishing touch.

VICTORIA

traditional



quick spec

door sizes

2.5mm HDF door facing	
44mm thickness	
particle board core	78 X 24
reducible by 3mm per side	78 X 26
dowelled construction	78 X 28
ornate hardwood decorative bed bead	78 X 30
15mm thick HDF panel	80 X 32
glass models - unglazed	80 X 34
factory premium primed in white (RAL 9003)	
internal use only	

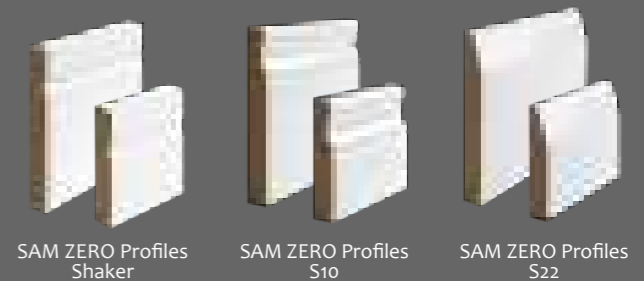
please note

Model Victoria Traditional 2 lite 2 panel comes **only** in 3 sizes 80x34, 80x32 & 78x30.

For double doors a T-lipping must be used.

Rebating a door will invalidate the guarantee and should not be done.

skirting & architrave options

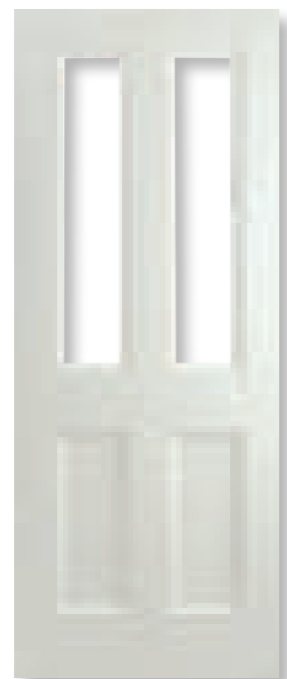


For further information on skirting and architrave options please refer to the moulding section on pages 132-141.

handle options



For further information on handle options please refer to the door handles section on pages 122-131.



victoria traditional
2 panel 2 lite
unglazed



victoria traditional
4 panel

- a - Victoria traditional 4 panel
- b - Victoria traditional 2 lite 2 panel (moulding detail)



PHOTO: Model Carrara smooth.

This moulded range of interior doors is available in a choice of smooth or woodgrain finishes, offering both traditional and contemporary designs with complementary glazed and fire door options.

The Arlington skin is discontinued from 2021 and is replaced by the York. Minor differences in the panel profile can be seen in the York model compared to the Arlington.

Arctic doors are manufactured by Norma Doors Technologies.

Models with * symbol have a fire-rated fd30 (and in some cases fd60) version which can be seen in the regency fire section pp 98-99, 110-111.



ARCTIC

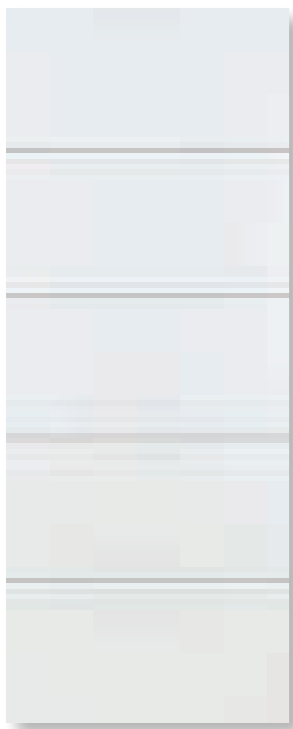
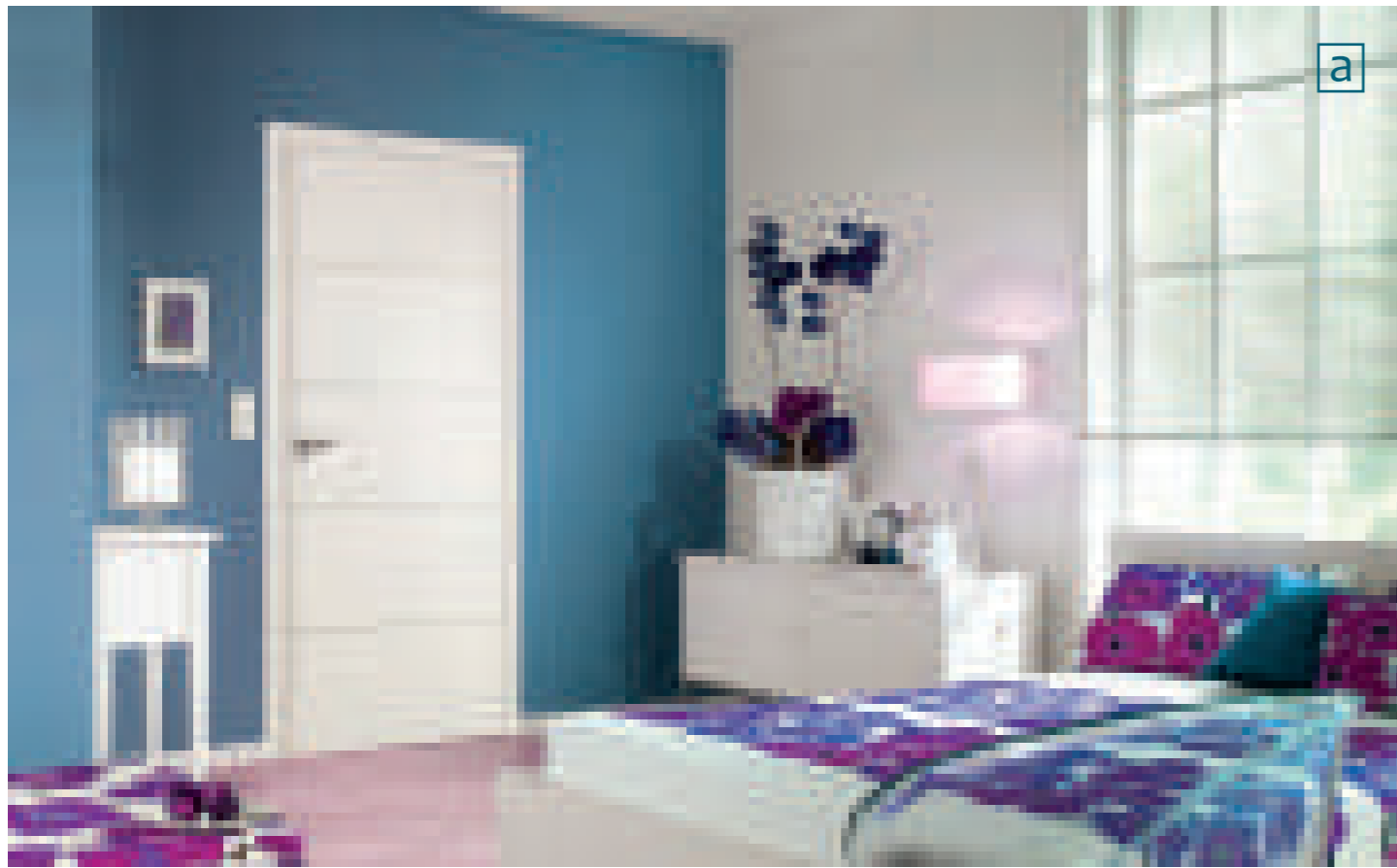
range





- a - York* smooth
- b - Bostonian* woodgrain
- c - Classique* woodgrain
- d - Carrara smooth





linea
smooth



linea glazed
smooth
clear glass



carrara*
smooth



york*
smooth

- a - Linea smooth
- b - York* smooth
- c - Carrara* smooth

PLEASE NOTE

Models with * symbol have a fire-rated fd30 (and in some cases fd60) version which can be seen in the regency fire section pp 98-99, 110-111.



quick spec	door sizes
dufaylite paper core	78 X 24
44mm thickness	78 X 26
3mm fibreboard facing	78 X 28
factory premium primed in white (RAL 9003)	78 X 30
internal use only	80 X 32
	80 X 34

please note

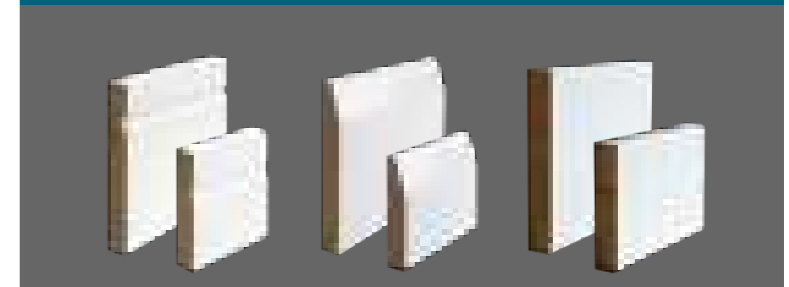
Models with * symbol have a fire-rated fd30 (and in some cases fd60) version which can be seen in the regency fire section pp 98-99, 110-111.

Models *York & Bostonian* also available in size 78x21.

Arctic models are manufactured by Norma Doors Technologies.

For double doors a T-lipping must be used. Rebating a door will invalidate the guarantee and should not be done.

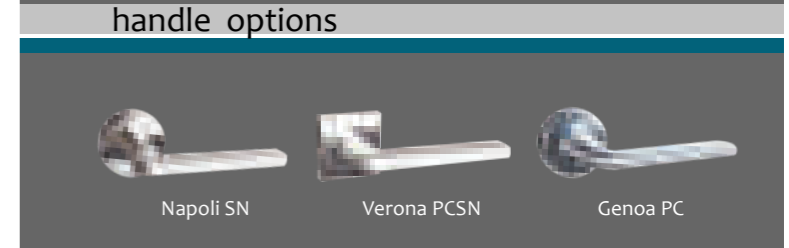
skirting & architrave options



SAM ZERO Profiles Shaker SAM ZERO Profiles S22 Java PAO

For further information on skirting and architrave options please refer to the moulding section on pages 132-141.

handle options



Napoli SN Verona PCSN Genoa PC

For further information on handle options please refer to the door handles section on pages 122-131.



bostonian* woodgrain



classique glazed woodgrain clear glass



classique* woodgrain

a - Bostonian* woodgrain
b - Classique* woodgrain
c - Classique glazed woodgrain (clear glass)

PLEASE NOTE
Models with * symbol have a fire-rated fd30 (and in some cases fd60) version which can be seen in the regency fire section pp 98-99, 110-111.

NEW MODELS



With an ever increasing level of inspection, choosing the correct fire door, frame and intumescent materials requires careful consideration to ensure compliance.

At Doras the emphasis is on product quality so it is our policy to use only those fire door manufacturers that use proper manufacturing methods and quality materials to ensure a finished product that is attractive, fit for purpose and compliant to regulations.

All stocked products are certified fire resistant to the required European or British standards (EN 1634 or BS 476) with full accreditation from the relevant testing authorities.

At Doras we stock imperial and metric sizes as standard in many of our ranges and out-sized and off standard sizes are also available to order.

FIRE DOOR

range



a



b



c



d

- a - Pant 6 fd30 (Java fd range)
- b - Flush primed fd30 / fd60 (Norma fd range)
- c - Model Tacto 7300 fd30 basalt grey (Proma fd range)
- d - Primed shaker 1 panel fd30 (Norma fd range)



quick spec

solid particleboard core with minimum density of 560 kg/m³
 45mm thickness
 fd30 rating
 side lipping in solid timber with vinylacetate adhesive D-3
 veneered in vinyl of prime quality of 0.6 mm thickness
 edge-banded on wholeperimeter in PVC glued with
 PUR D-4 adhesive
 internal use only

door sizes

78 X 24
 78 X 26
 78 X 28
 78 X 30
 80 X 32
 80 X 34

please note

All Tacto models are available ex-stock now.
 All models are fd30 rated.
 Off-standard sizes are also available to order.

skirting & architrave options



SAM ZERO Profiles S22

DAIKEN grey

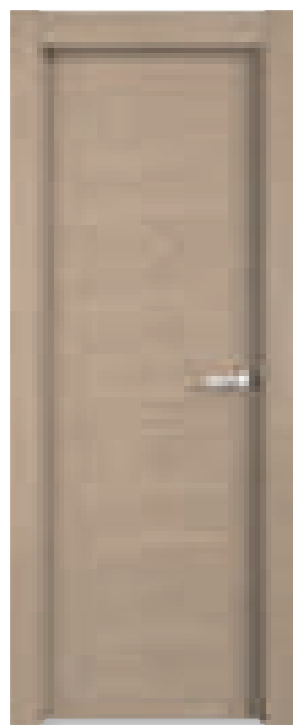
SAM ZERO Profiles Shaker

For further information on skirting and architrave options please refer to the moulding section on pages 132-141.

NEW

NEW

NEW



Tacto 7300 fd30
desert beige



Tacto 7300 fd30
glacier grey



Tacto 7300 fd30
basalt grey

a - Model Tacto 7300 fd30 desert beige
b - Model Tacto 7300 fd30 glacier grey





a - Carrara fd30 smooth
 b - Classique fd30 woodgrain
 c - Bostonian fd30 / fd60 woodgrain

quick spec

door sizes

routed particle board core	78 X 24
44mm / 54mm thickness	78 X 26
3mm fibreboard facing	78 X 28
factory premium primed in white (RAL 9003)	78 X 30
internal use only	80 X 32
	80 X 34

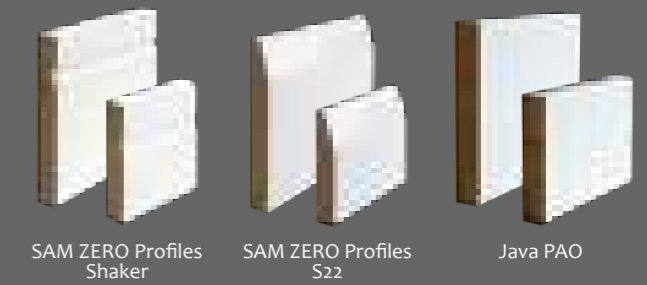
please note

Model York fd30 also available in size 80x36.

Models York fd60 & Bostonian fd60 available **only** in 2 sizes - 78x30 & 80x32.

All Norma fire doors are tested to European (Tecnalia) and British (Warrington) standards of fire safety - certificates available on request.

skirting & architrave options



For further information on skirting and architrave options please refer to the moulding section on pages 132-141.

handle options

To view our range of complementary and fully certified Arrone fire door ironmongery kits please refer to pages 128-129.



york fd30 / fd60 smooth



carrara fd30 smooth



classique fd30 woodgrain



bostonian fd30 / fd60 woodgrain





a - Norma metric range. Flush white fd30 / fd60



flush oak
fd30 / fd60
NORMA METRIC



flush primed
fd30 / fd60
NORMA METRIC

quick spec (contract fd30)

MDF white facing
45mm thickness
30mm solid pine frame construction
reducible by 3mm per side
factory primed in white
internal use only

quick spec (norma metric fd30 / fd60)

solid chipboard core
45mm / 54mm thickness
3mm MDF facing / oak veneer
primed white / clear lacquer
internal use only

door sizes (contract / norma fd30)

78 X 24	78 X 30
78 X 26	80 X 32
78 X 28	80 X 34

norma metric door sizes

flush primed fd30	flush oak fd30
2040 x 426	2040 x 426
2040 x 526	2040 x 526
2040 x 626	2040 x 626
2040 x 726	2040 x 726
2040 x 826	2040 x 826
2040 x 926	2040 x 926
2040 x 970	2040 x 1026
2040 x 1026	
flush primed fd60	flush oak fd60
2040 x 426	2040 x 426
2040 x 526	2040 x 726
2040 x 626	2040 x 826
2040 x 726	2040 x 926
2040 x 826	2040 x 1026
2040 x 926	
2040 x 1026	

please note

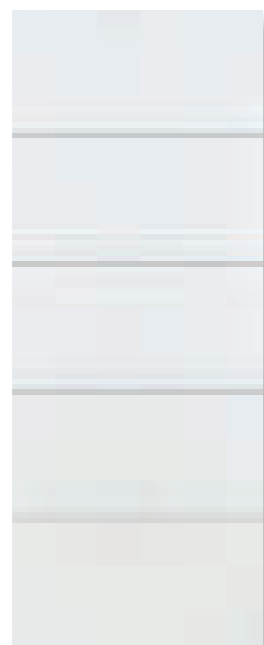
* The primed shaker fd30 glazed door from Norma incorporates a large single clear pane of EW 7mm Pyroguard fire rated glass. This design gives the maximum amount of light while still capable of providing 30 min of fire protection.

PLEASE NOTE

Doras Distributors is the exclusive agent for Norma products in the Republic of Ireland. For more information please see www.norma-doors.com.



minotaur fd30
CONTRACT



centaur fd30
CONTRACT



pegasus fd30
CONTRACT



pant 6 fd30
NORMA



primed shaker 1p
fd30
NORMA



primed shaker fd30
clear glass
NORMA*



PLEASE NOTE

*Fire blank fd30 / fd60 not manufactured by Norma.

quick spec (fire blank fd30 / fd60)

paint grade ply veneer
45mm / 54mm thickness
fd30 / fd60 laminated wooden core
unrestricted reducibility - lipping removal and reinstatement possible
can be cut to size (do not trim from the top)
must be well sealed after adjusting
only fd30 can be used externally
unfinished

quick spec (primed MDF fd30 / fd60)

solid chipboard core
45mm / 54mm thickness
fd30 / fd60 fire resistant chipboard core
3mm MDF facing
primed white
internal use only

quick spec (veneered oak / ash fd30 / fd60)

0.6mm oak / ash veneer
45mm / 54mm thickness
fd30 / fd60 fire resistant chipboard core
6mm / 10mm hardwood side lipping
high quality factory lacquer
internal use only

door sizes

flush primed MDF fd30

78 x 24
78 x 26
78 x 28
78 x 30
80 x 32
80 x 34

primed MDF fd60

78 x 30
80 x 32
80 x 34

fire blank fd30

80 x 32
84 x 36
96 x 48

flush oak / ash fd30

78 x 24
78 x 26
78 x 28
78 x 30
80 x 32
80 x 34

fire blank fd60

84 x 36

flush oak / ash fd60

78 x 30
80 x 32
80 x 34



flush oak veneered
fd30 / fd60



flush ash veneered
fd30 / fd60



flush primed
fd30 / fd60



fire blank*
fd30 / fd60



NEW MODELS



FIRE DOORS

All fire doors are certified to European or British standards (EN 1634 or BS 476) - certificates are available on request.

At Doras the emphasis is on product quality so it is our policy to use only those fire door manufacturers that use proper manufacturing methods and quality materials to ensure a finished product that is attractive, fit for purpose and compliant to regulations.

We stock imperial and metric sizes as standard in many of our ranges and out-sized and off standard sizes are also available to order.

Bespoke fire door design is also a service we can offer for commercial projects.

IRONMONGERY

All of our Norma fd30 fire doors have been tested and certified in conjunction with the internationally recognised Arrone brand of ironmongery.

These fire door kits take the guesswork out of the component selection process providing great peace of mind in the knowledge that both door and ironmongery elements are approved for use and together achieve the adherence critical to fire safety standards.

For further information on Arrone fire door ironmongery kits please refer to pp 128-129.

At Doras we have been selling fire doors for many years and during that time we have acquired an understanding and technical expertise with the product which enables us to inform, advise and recommend on many of the salient aspects of fire performance.

Our technical department is at your disposal when it comes to any questions or concerns you may have in relation to fire matters ie compliance, approved materials, installation methods etc.

FIRE DOOR range



- a - York fd30 / fd60 smooth (Regency fd range)
- b - Flush oak fd30 / fd60 & GC 06 oak fd30 / fd60 (Veneered fd range)
- c - Fire blank fd30 / fd60 (Blank, primed MDF fd range)
- d - Flush primed fd30 / fd60 (Blank, primed MDF fd range)



a



b

quick spec

solid particleboard core with minimum density of 560 kg/m³
 45mm thickness
 fd30 rating
 side lipping in solid timber with vinylacetate adhesive D-3
 veneered in vinyl of prime quality of 0.6 mm thickness
 edge-banded on wholeperimeter in PVC glued with
 PUR D-4 adhesive
 internal use only

door sizes

- 78 X 24
- 78 X 26
- 78 X 28
- 78 X 30
- 80 X 32
- 80 X 34

please note

All Tacto models are available ex-stock now.
 All models are fd30 rated.
 Off-standard sizes are also available to order.

skirting & architrave options



SAM ZERO Profiles S22

DAIKEN grey

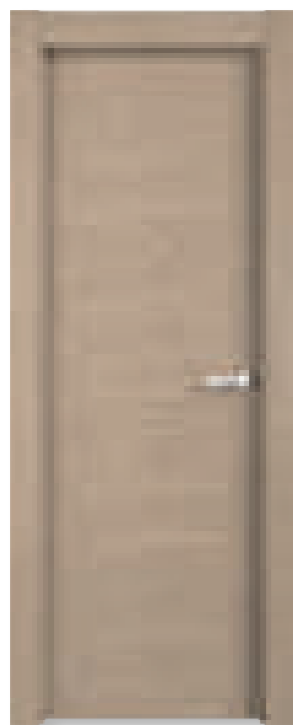
SAM ZERO Profiles Shaker

For further information on skirting and architrave options please refer to the moulding section on pages 132-141.

NEW

NEW

NEW



Tacto 7300 fd30
desert beige



Tacto 7300 fd30
glacier grey



Tacto 7300 fd30
basalt grey

a - Model Tacto 7300 fd30 desert beige
 b - Model Tacto 7300 fd30 glacier grey





- a - Carrara fd30 smooth
- b - Classique fd30 woodgrain
- c - Bostonian fd30 / fd60 woodgrain

a

b

c

quick spec

door sizes

routed particle board core	78 X 24
44mm / 54mm thickness	78 X 26
3mm fibreboard facing	78 X 28
factory premium primed in white (RAL 9003)	78 X 30
internal use only	80 X 32
	80 X 34

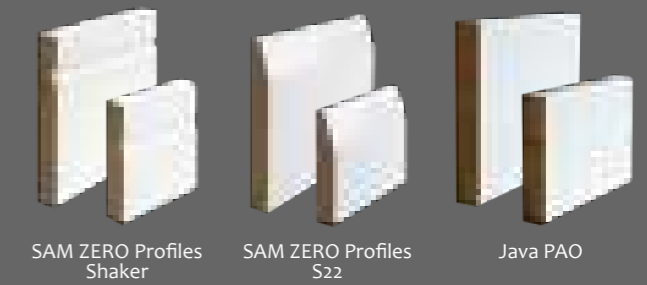
please note

Model York fd30 also available in size 80x36.

Models York fd60 & Bostonian fd60 available **only** in 2 sizes - 78x30 & 80x32.

All Norma fire doors are tested to European (Tecnalia) and British (Warrington) standards of fire safety - certificates available on request.

skirting & architrave options



SAM ZERO Profiles Shaker SAM ZERO Profiles S22 Java PAO

For further information on skirting and architrave options please refer to the moulding section on pages 132-141.

handle options

To view our range of complementary and fully certified Arrone fire door ironmongery kits please refer to pages 128-129.



york fd30 / fd60
smooth



carrara fd30
smooth



classique fd30
woodgrain



bostonian fd30 / fd60
woodgrain





PLEASE NOTE

Doras Distributors is the exclusive agent for Norma products in the Republic of Ireland. For more information please see www.norma-doors.com.



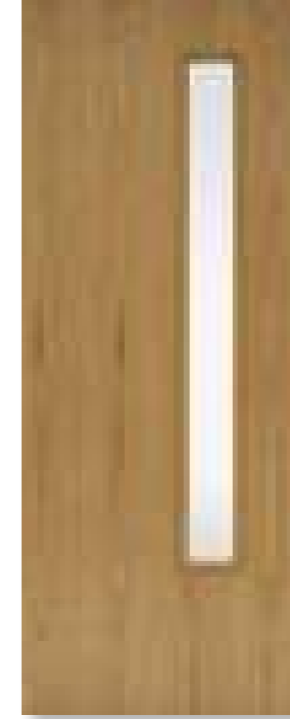
flush primed
fd30 / fd60



gw o6 primed
fd30 / fd60



flush oak
fd30 / fd60



gc o6 oak
fd30 / fd60

quick spec

solid chipboard core
45mm / 54mm thickness
3mm MDF facing / oak veneer
primed white / clear lacquer
internal use only

norma metric door sizes

flush primed fd30	flush primed fd60
2040 x 426	2040 x 426
2040 x 526	2040 x 526
2040 x 626	2040 x 626
2040 x 726	2040 x 726
2040 x 826	2040 x 826
2040 x 926	2040 x 926
2040 x 970	2040 x 1026
2040 x 1026	

flush oak fd30	flush oak fd60
2040 x 426	2040 x 426
2040 x 526	2040 x 726
2040 x 626	2040 x 826
2040 x 726	2040 x 926
2040 x 826	2040 x 1026
2040 x 926	
2040 x 1026	

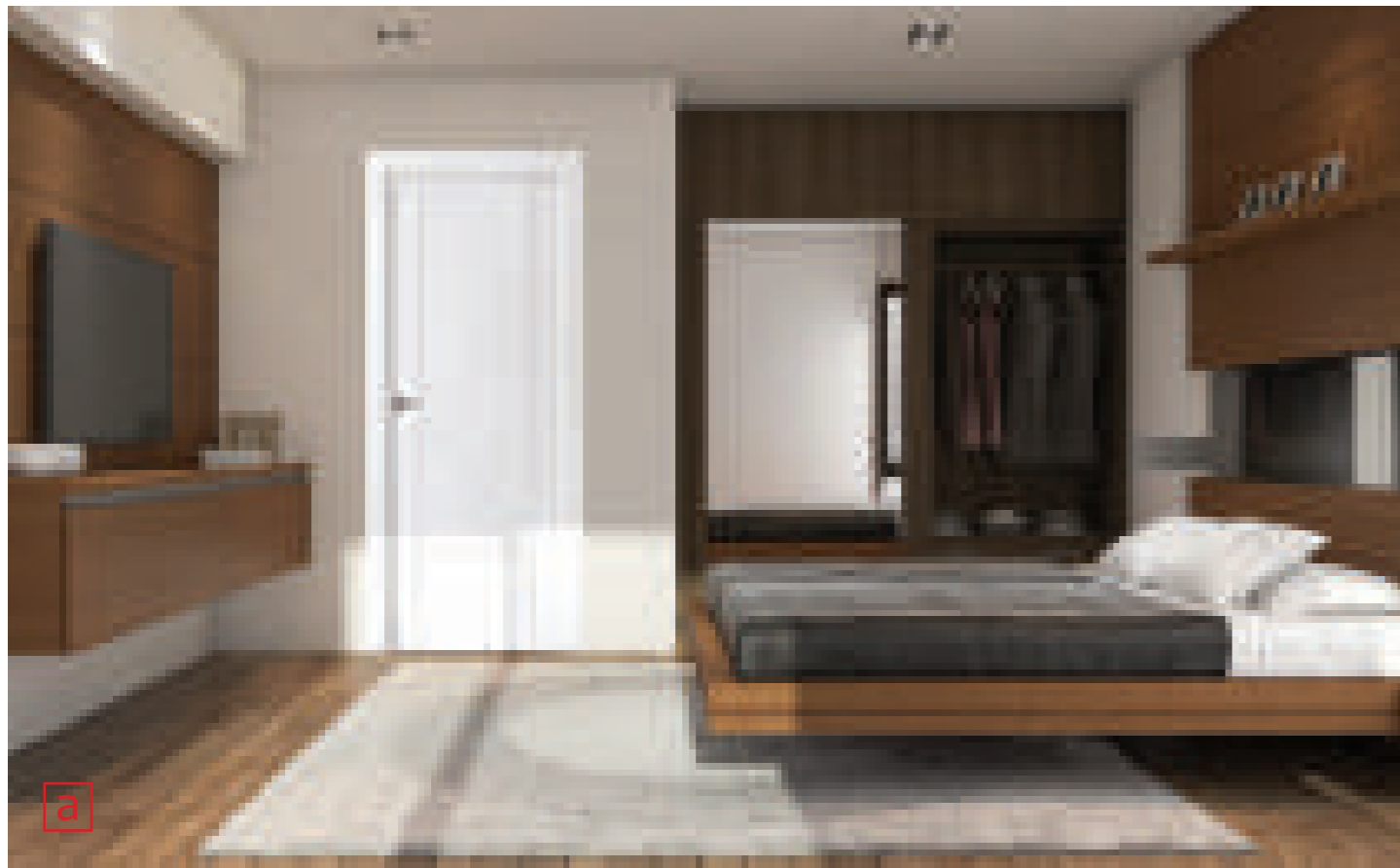
gw o6 primed fd30	gw o6 primed fd60
2040 x 826	2040 x 826
2040 x 926	2040 x 926

gc o6 oak fd30	gc o6 oak fd60
2040 x 826	2040 x 826
2040 x 926	2040 x 926
2040 x 1026	2040 x 1026

please note

All Norma fire doors are tested to European (Tecnalia) and British (Warrington) standards of fire safety - certificates available on request.





a - Norma range. Pant 6 fd30
 b - Norma range. Primed shaker fd30
 1 panel

quick spec (contract fd30)

MDF white facing
 45mm thickness
 30mm solid pine frame construction
 reducible by 3mm per side
 factory primed in white
 internal use only

door sizes (contract fd30)

- 78 X 24
- 78 X 26
- 78 X 28
- 78 X 30
- 80 X 32
- 80 X 34

quick spec (norma fd30)

solid chipboard core
 45mm thickness
 3mm MDF facing
 primed white
 internal use only

door sizes (norma fd30)

- 78 X 24
- 78 X 26
- 78 X 28
- 78 X 30
- 80 X 32
- 80 X 34

please note

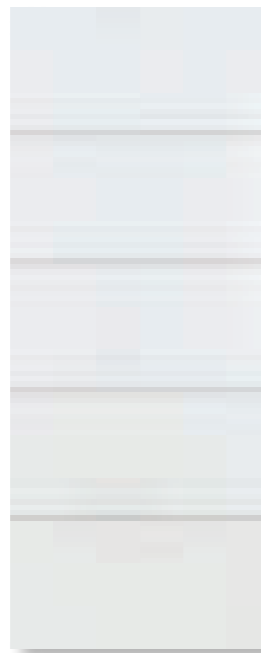
* The primed shaker fd30 glazed door from Norma incorporates a large single clear pane of EW 7mm Pyrogard fire rated glass. This design gives the maximum amount of light while still capable of providing 30 min of fire protection.

PLEASE NOTE

Doras Distributors is the exclusive agent for Norma products in the Republic of Ireland. For more information please see www.norma-doors.com.



minotaur fd30
 CONTRACT



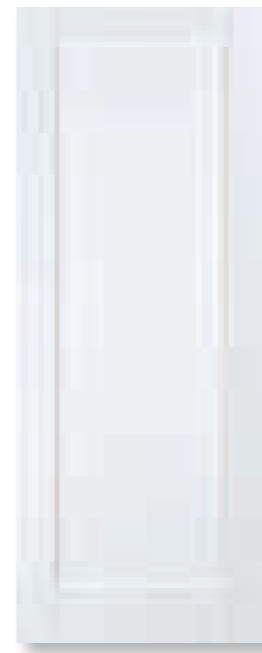
centaur fd30
 CONTRACT



pegasus fd30
 CONTRACT



pant 6 fd30
 NORMA

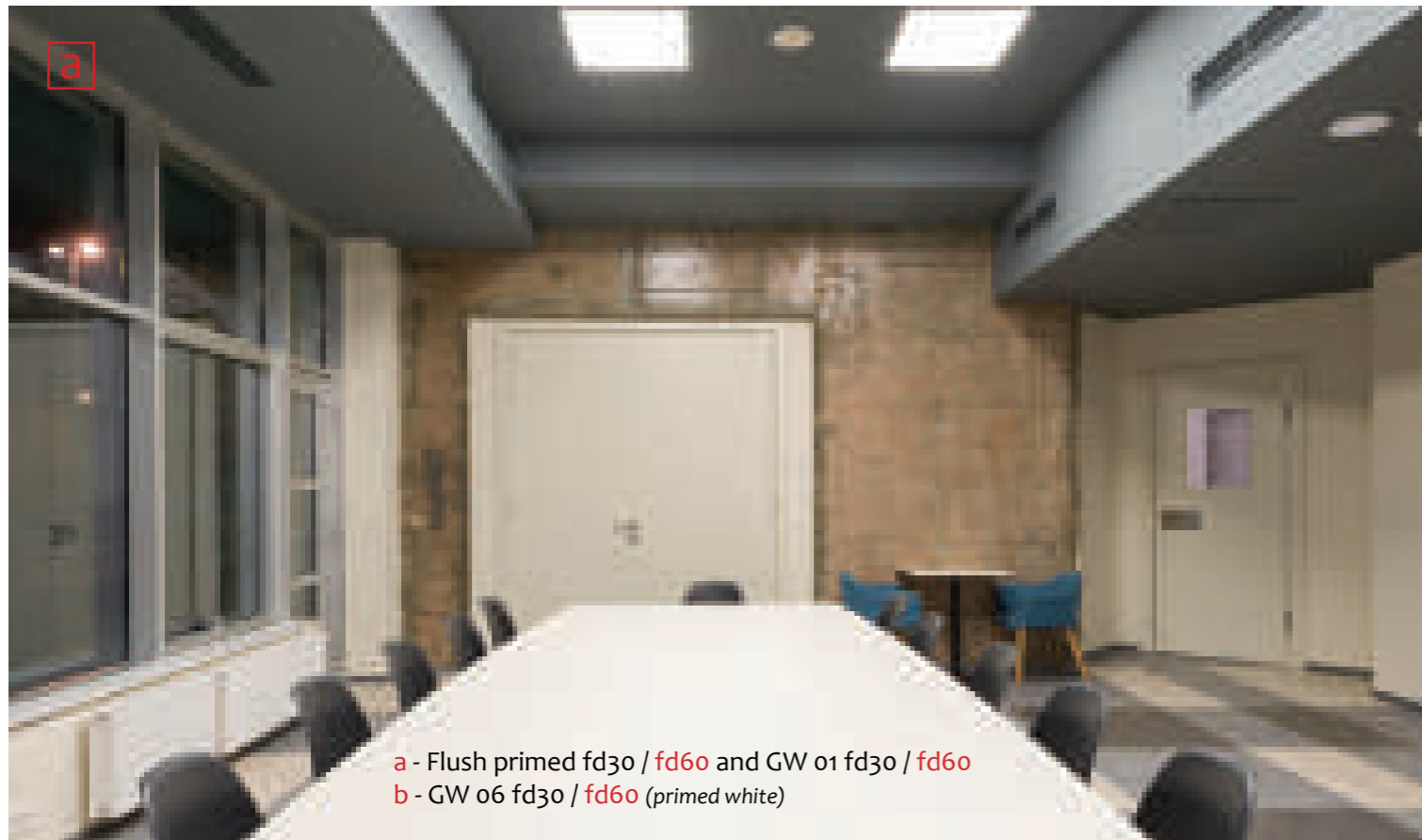


primed shaker fd30
 1 panel
 NORMA

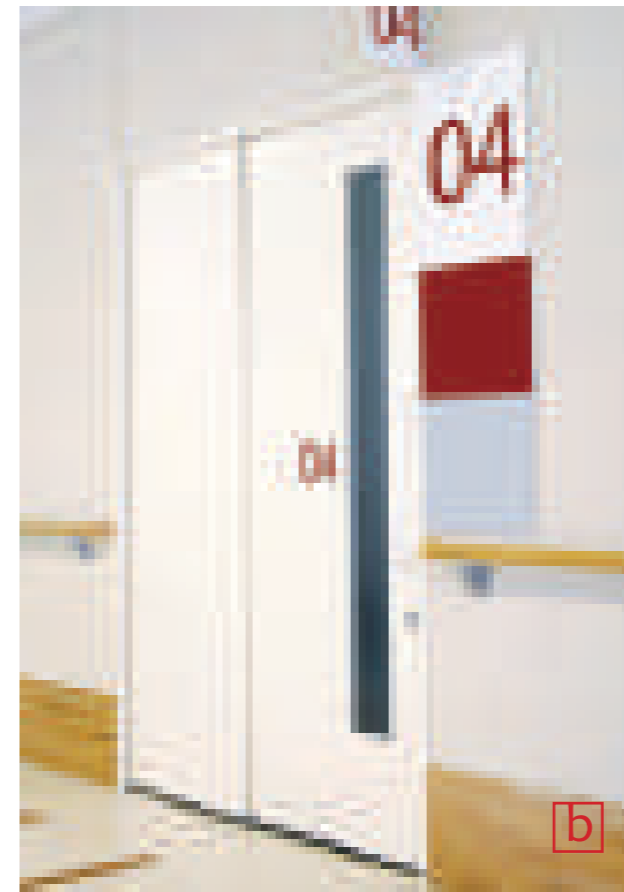


primed shaker fd30
 clear glass
 NORMA*





a - Flush primed fd30 / fd60 and GW 01 fd30 / fd60
 b - GW 06 fd30 / fd60 (primed white)



b

quick spec (fire blank fd30 / fd60)

paint grade ply veneer
 45mm / 54mm thickness
 fd30 / fd60 laminated wooden core
 unfinished
 unrestricted reducibility - lipping removal and reinstatement possible
 can be cut to size (do not trim from the top)
 must be well sealed after adjusting
 only fd30 can be used externally

quick spec (primed MDF fd30 / fd60)

fd30 / fd60 fire resistant chipboard core
 45mm / 54mm thickness
 3mm MDF facing
 primed white
 glass models - preglazed in 6mm georgian wire glass
 internal use only

door sizes

fire blank fd30 80 x 32 84 x 36 96 x 48	fire blank fd60 84 x 36
flush primed MDF fd30 78 x 24 78 x 26 78 x 28 78 x 30 80 x 32 80 x 34	flush primed MDF fd60 78 x 30 80 x 32 80 x 34
gw 01 fd30 / fd60 78 x 30 80 x 32 80 x 34	gw 05 fd30 / fd60 78 x 30 80 x 32 80 x 34
	gw 06 fd30 / fd60 78 x 30 80 x 32 80 x 34

PLEASE NOTE

*Fire blank fd30 / fd60 not manufactured by Norma.



flush primed
fd30 / fd60



gw 01 primed
fd30 / fd60



gw 05 primed
fd30 / fd60



gw 06 primed
fd30 / fd60



fire blank*
fd30 / fd60





a

b

c

a - Flush oak fd30 / fd60
 b - Flush oak fd30 / fd60
 c - GC 06 ash fd30 / fd60

quick spec for veneered oak fd30 / fd60

0.6mm oak veneer
 45mm / 54mm thickness
 fd30 / fd60 fire resistant chipboard core
 6mm / 10mm hardwood side lipping
 glass models - preglazed in fire-rated clear glass
 high quality factory lacquer
 internal use only

quick spec for veneered ash fd30 / fd60

0.6mm ash veneer
 45mm / 54mm thickness
 fd30 / fd60 fire resistant chipboard core
 6mm / 10mm hardwood side lipping
 glass models - preglazed in fire-rated clear glass
 high quality factory lacquer
 internal use only

please note

All Norma firedoors are tested to European (Tecnalia) and British (Warrington) standards of fire safety - certificates available on request.

door sizes

flush oak / ash fd30	flush oak / ash fd60
78 x 24	78 x 30
78 x 26	80 x 32
78 x 28	80 x 34
78 x 30	
80 x 32	
80 x 34	
gc 06 oak / ash fd30	gc 06 oak / ash fd60
78 x 30	78 x 30
80 x 32	80 x 32
80 x 34	80 x 34



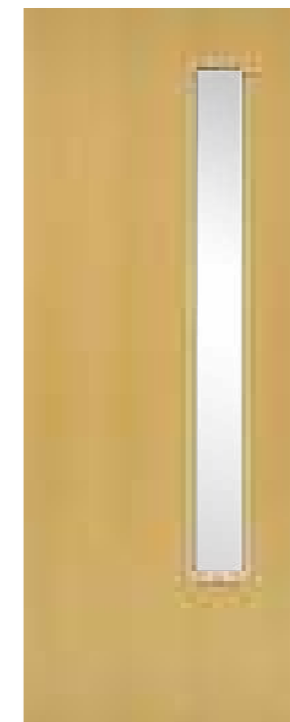
flush oak
fd30 / fd60



gc 06 oak
fd30 / fd60

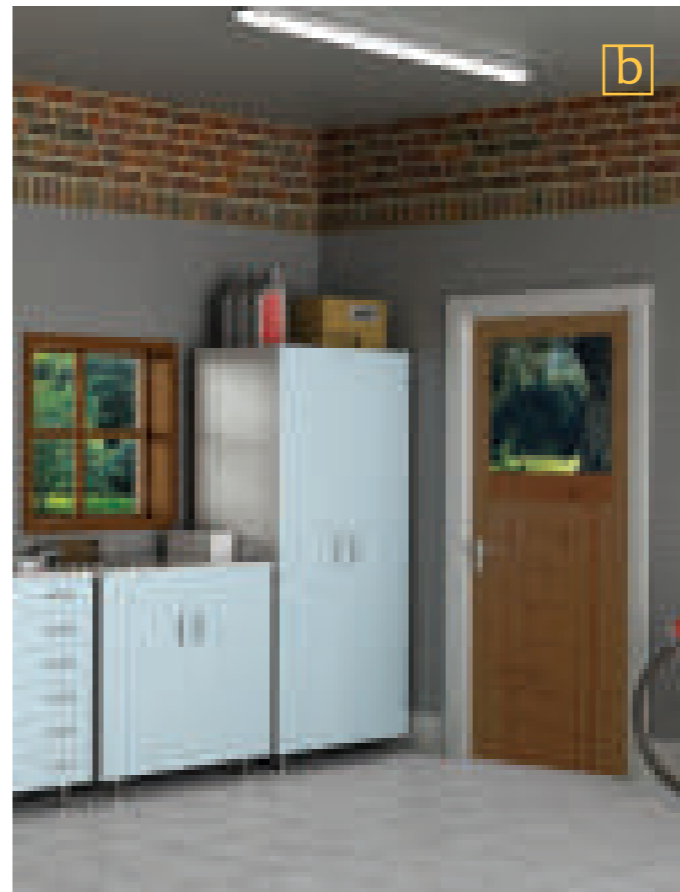


flush ash
fd30 / fd60



gc 06 ash
fd30 / fd60





Red deal doors are made from high quality kiln-dried Scandinavian redwood that has been carefully selected to provide good stability in use.

The three red deal models are suitable only for external use.

quick spec

solid scandinavian redwood
 44mm thickness
 dowelled construction
 unvarnished
 glass models - unglazed
 external use only

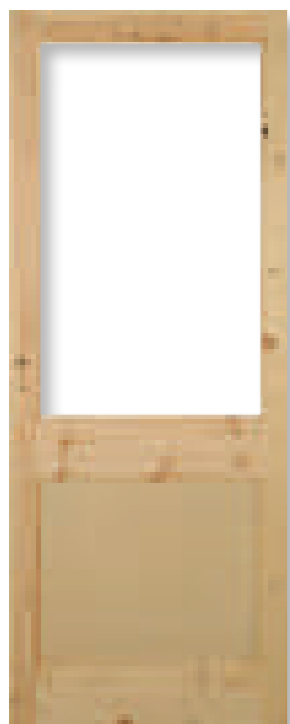
door sizes

78 X 30
 80 X 32
 82 X 34

PLEASE NOTE

The three red deal models are suitable only for external use.

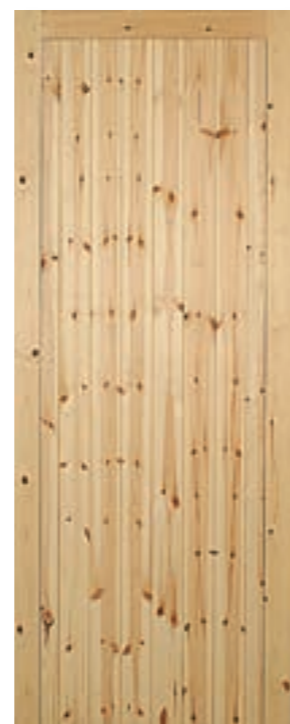
a - Denby
 b - Erwood



burton



erwood



denby

RED DEAL range



PHOTO: Model Siena SN handle.

Often it can be the finishing touches and the little extras which can be the icing on the cake for your home. Stylish Italian designed handles - Arte Toscana - bring elegance and durability in a contemporary style to complement any home (pages 126-127).

Arrone fire door kits take the guesswork out of the component selection process providing great peace of mind in the knowledge that both door and ironmongery elements are approved for use and together achieve the adherence critical to fire safety standards. For further information on Arrone fire door ironmongery kits please refer to pages 128-129.

The Rutland FD30 concealed door closer has been tested and certified for use with all Norma fd30 fire doors. An essential element to achieve compliance where Norma fire doors are specified in conjunction with a concealed closer mechanism. Please refer to pages 130-131.*

**Not a Doras Distributors standard stock item.*

IRONMONGERY

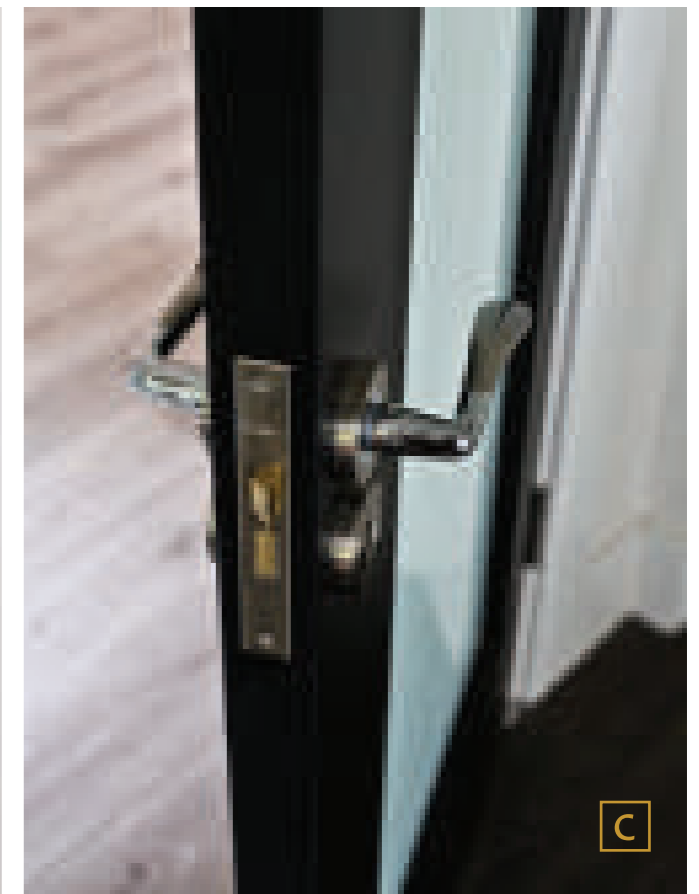
range



- a - Fd30 concealed door closer*
- b - Florence SN handle
- c - Napoli SN handle
- d - Verona PCSN handle



a - Siena SN handle
 b - Florence SN handle
 c - Venice PCSC handle



A beautiful addition to any door - this range of stunning Italian designed lever handles comes with a 15-year mechanical guarantee.

A demanding level of laboratory testing has been carried out to ensure these handles will provide years of trouble free use.



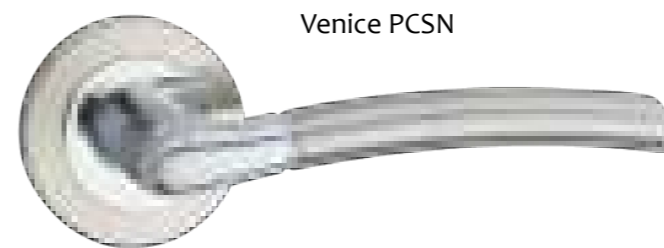
- 15 year mechanical guarantee on handles, hinges and locks
- 48-hour salt mist test
- Cyclically tested to 200.000 operations



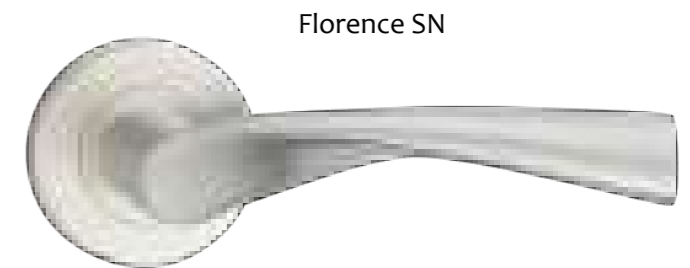
Verona PCSN



Rimini SN



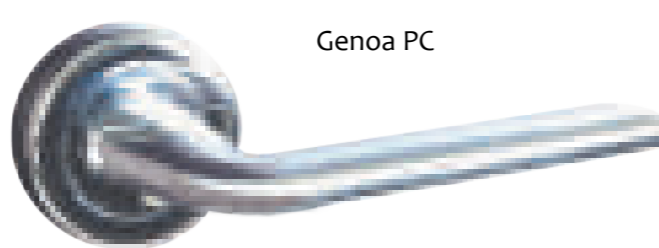
Venice PCSN



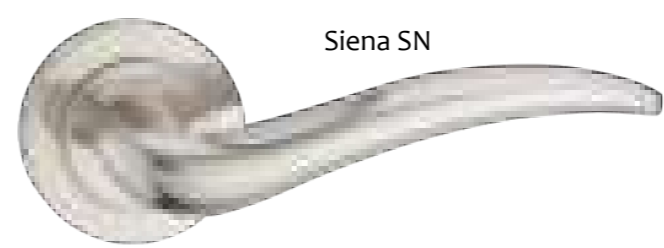
Florence SN



Napoli SN



Genoa PC



Siena SN



Pompeii SN



FD IRONMONGERY KITS

Doras Distributors in conjunction with Spanish fire door manufacturing partner Norma Doors Technologies have jointly undertaken an exhaustive programme of fire testing which combines the respected Arrone ironmongery brand (member of the international Hoppe Group) with Norma's range of FD30 fire door models.

The result is a range of fully certified ironmongery kits specifically suited for use with the Norma FD30 fire door.

Kit C – FD30 Corridor Door Non-Locking



Kit D – FD30 Deadlocking Door



Kit E – FD30 Office Door Locking



Kit A – FD30 Corridor Door Locking

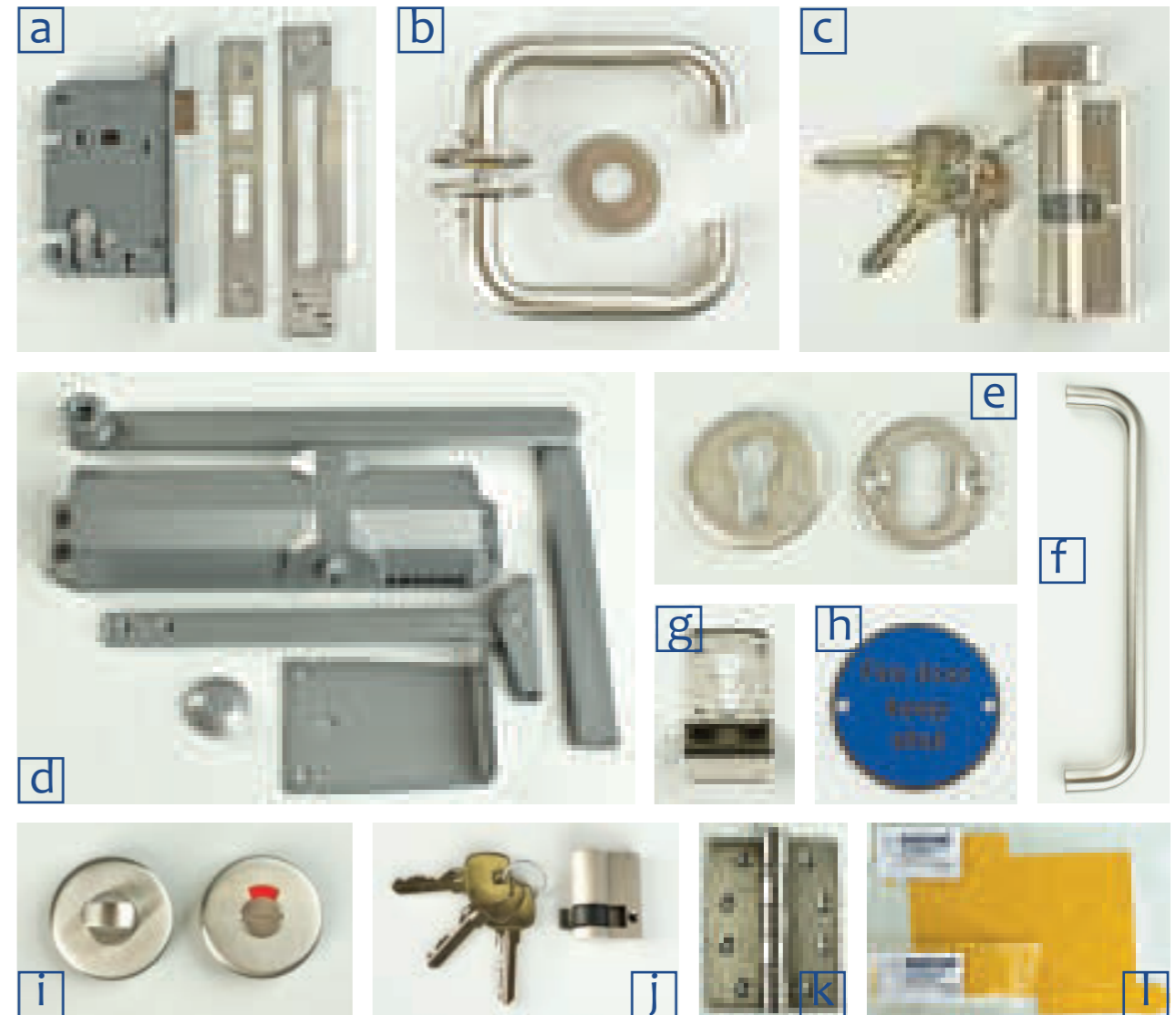


Kit B - FD30 Bathroom Door Locking



Each kit is conveniently packaged in a robust box with line drawings on the top clearly indicating kit type and contents. In addition to this each box includes a contents listing on the bottom.

These ironmongery kits have been tested to both European (Ensatec) and UK (Certifire) fire safety standards. (Certificates available on request).



Below is a listing covering the main items* of componentry found across this range of kits:

- a - Mortice sash lock
- b - Pair of 19mm RTD lever on sprung rose
- c - Euro profile cylinder and turn 70mm
- d - Overhead door closer
- e - Escutcheons
- f - Straight pull handle 300mm
- g - Cylinder pull
- h - Fire door keep shut sign
- i - Disabled bathroom turn and release
- j - Single cylinder 40mm
- k - Ball bearing SS grade 13 hinge x3
- l - Intumescent pack x2



*Some boxes contain additional items / specification not shown in the photos.



FD30 CONCEALED DOOR CLOSER

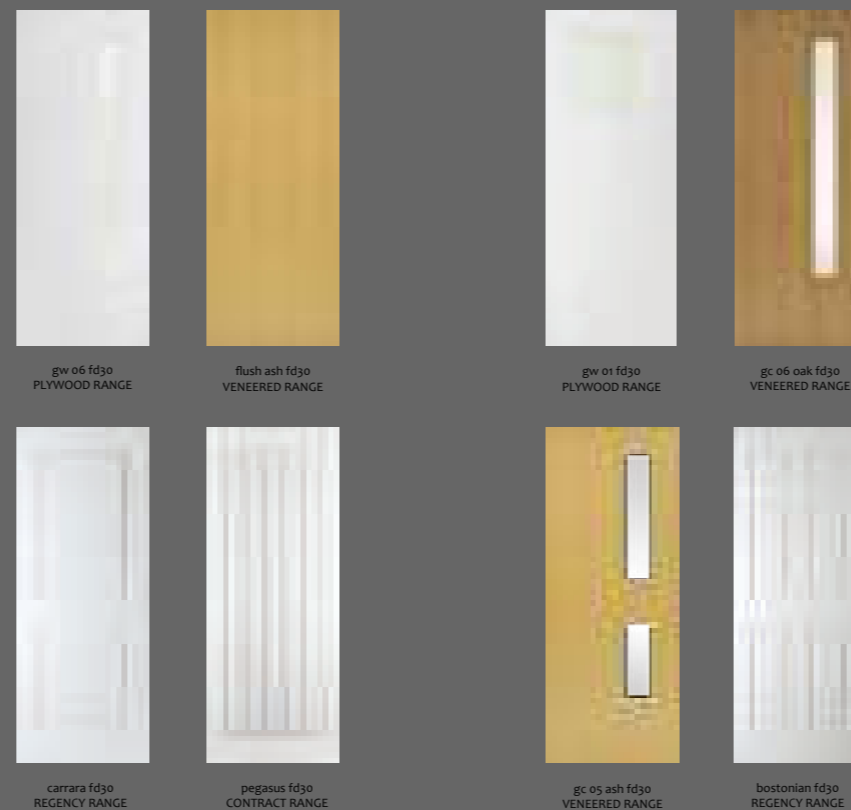
Introducing the Rutland FD30 concealed door closer. This product* has been tested and certified for use with all Norma fd30 fire doors. An essential element to achieve compliance where Norma fire doors are specified in conjunction with a concealed closer mechanism.

PRODUCT OVERVIEW

- Slimmest profile Cam Action Closer at 32mm on the Market – including intumescent.
- Ease of use in Domestic housing for Small Children and Older people and still allowing fire compliance for self closing from any angle.
- Complete control over closing from any angle.
- Suitable for 44mm Doors.
- Suitable for doors up to 1100mm wide and 80kgs in weight.
- EN1634 Test for fd30 fire rating in all Norma Fire doors.
- EN1154 Mechanical Testing for sustainability also completed in Norma Doors.
- Easy to read instructions, saving over 12 minutes of fitting time.

*Not a Doras Distributors standard stock item.

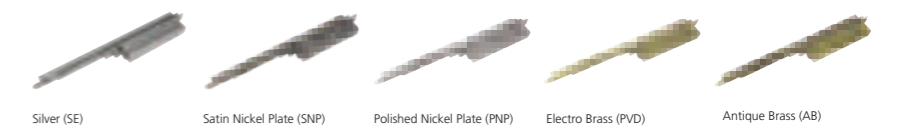
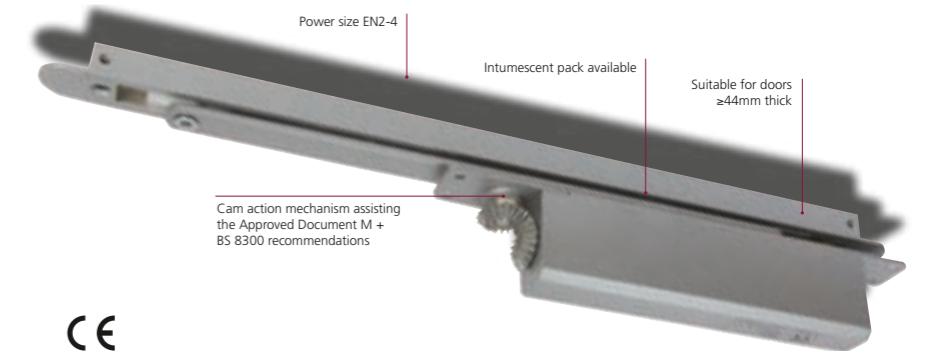
FD30 DOOR STYLES



Please contact our sales department for further details.

CONCEALED SLIDE ARM MECHANISM

ITS. 11204





Very often it can be the accessories to a project that get overlooked and in the case of internal doors this can certainly be true. Sourcing the right skirting and architrave to achieve the perfect match is an essential part of 'getting it right'.

On these pages you will find an impressive selection of quality mouldings which will provide that all important finishing touch.



MOULDINGS

section

sam zero white / sam wrap oak

java white

daiken shaker

red deal / fd set

norma white / ash / oak fd30 / fd60

mahogany fd60



- a - SAM ZERO mouldings display stand
- b - Norma oak 1 hr fd frame with intumescent strip and soft closer
- c - SAM ZERO shaker skirting and architrave
- d - SAM ZERO display board
- e - SAM WRAP ogee skirting and architrave
- f - Mixed mouldings
- g - Norma white 1 hr fd frame

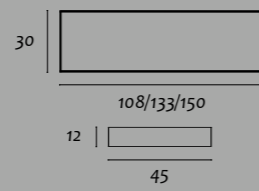
DESCRIPTION

DOORFRAME
108/133/150X30
& DOORSTOP
45X12

PROFILE



TECHNICAL DRAWING



QUICK SPEC

- moisture resistant mdf core
- full factory finish
- RAL white 9003

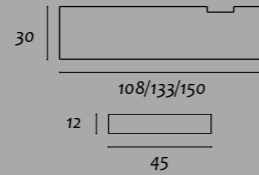
NOTES

doorframe sets for single doors

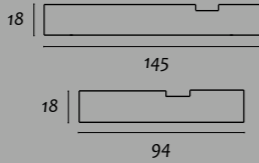
fd30 doorframe includes 15x4mm groove for intumescent strip

architrave pack sizes 5x2.2m lengths, skirting pack sizes 5x3.6m lengths

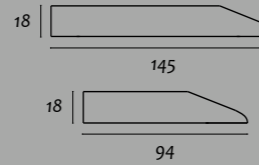
FIRE FRAME fd30
108/133/150X30
& DOORSTOP
45X12



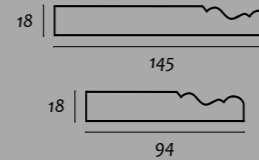
SHAKER
skirting 145X18
& architrave 94X18



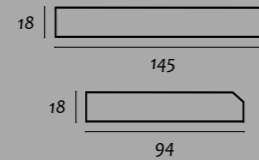
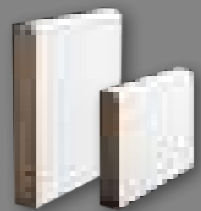
CHAMFERED S22
skirting 145X18
& architrave 94X18



OGEE WHITE S10
skirting 145X18
& architrave 94X18



SP601
skirting 145X18
& architrave 94X18



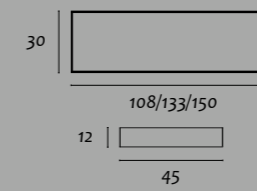
DESCRIPTION

DOORFRAME
108/133/150X30
& DOORSTOP
45X12

PROFILE



TECHNICAL DRAWING



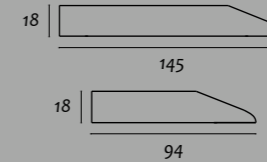
QUICK SPEC

- moisture resistant mdf core
- full factory finish
- oak veneer

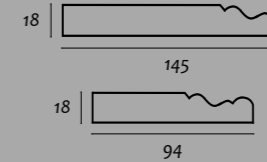
NOTES

Please refer to NOTES for SAM ZERO on page 92.

CHAMFERED
skirting 145X18
& architrave 95X18



OGEE
skirting 145X18
& architrave 95X18



SAM WRAP mouldings is a range of MDF profiles covered in real oak veneer and finished in a factory applied high quality varnish. Ready for on-site installation.



SAM ZERO mouldings is a range of pre-primed moisture resistant MDF white mouldings which come complete with two coats of water based acrylic gloss. The result - no further painting is required. This means quick and easy installation on site with a consistent product finish every time. The benefit - time and labour saving.



Still think it's a good idea to have the painters round?
Think again.

BENEFITS COMPARED TO REAL TIMBER OR PVC

- Remarkable stability
- Excellent moisture resistance
- No defects or knots
- No warping
- Supplied fully finished
- Low maintenance
- Easily machined
- Suitable in humid environments
- FSC Certified
- Smooth surface
- Consistent fibre quality throughout
- Natural paint finish
- Highly durable
- Scratch resistant
- Modern and contemporary style
- No need to paint
- Easy to install

DESCRIPTION	PROFILE	TECHNICAL DRAWING	QUICK SPEC	NOTES
DOORFRAME 133x30 & DOORSTOP 45x12			<ul style="list-style-type: none"> solid finger joint timber core premium primed chamfered, decorative & square profiles 	doorframe sets for single doors
CHAMFERED skirting 143x18 & architrave 95x18				architrave pack sizes 5x2.2m lengths, skirting pack sizes 5x3.6m lengths
PAO skirting 143x18 & architrave 95x18				
T-LIPPING 44mm 2.2m				T-lipping shown in white. Also available in silk grey, oak and solid black.

Java White is a range of contemporary style mouldings with a primed factory paint treatment.

DESCRIPTION	PROFILE	TECHNICAL DRAWING	QUICK SPEC	NOTES
GREY DOORFRAME 108/133/150X30mm & DOORSTOP 45X12			<ul style="list-style-type: none"> durable wood effect laminate shaker profile 	doorframe sets for single doors
GREY skirting 145x18 & architrave 95x18				architrave pack sizes 5x2.2m lengths, skirting pack sizes 5x3.6m lengths
GREY T-LIPPING 44mm 2.2m				
WALNUT DOORFRAME 108/133/150X30mm & DOORSTOP 45X12				
WALNUT skirting 145x18 & architrave 95x18				
WALNUT T-LIPPING 44mm 2.2m				

DAIKEN

The profiles in this selection of mouldings offer a perfect complement to the doors in the Daiken range.

JAVA white

DAIKEN grey / walnut

DESCRIPTION	PROFILE	TECHNICAL DRAWING	QUICK SPEC	NOTES
DOORFRAME 7'				<ul style="list-style-type: none"> solid scandinavian redwood unfinished
1/2hr FIRE FRAME 7'				
DOOR SADDLE 1m & 6'				

Solid Scandinavian Redwood is used in the machining of these mouldings. Random selection of knots. Suitable for varnishing or painting.

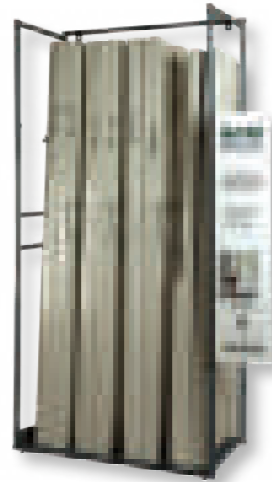
DESCRIPTION	PROFILE	TECHNICAL DRAWING	QUICK SPEC	NOTES
WHITE MDF frame 108/133/150x38mm				
WHITE MDF fd30 frame 108/133/150x38mm				
OAK MDF fd30 frame 108/133/150x38mm NEW				<ul style="list-style-type: none"> moisture resistant MDF core premium primed and veneers in ash & oak complete with intumescent strip
WHITE 1hr fire frame 100/130x38mm				
ASH 1hr fire frame 100/130x38mm				
OAK 1hr fire frame 100/130x38mm				



MAHOGANY 1hr fire frame 7'				<ul style="list-style-type: none"> not manufactured by Norma 1hr fire frame intumescent strip sold separately
----------------------------	--	--	--	---



sam zero mouldings display board



sam zero mouldings display stand



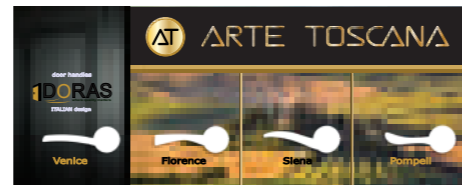
2-door display stand



8-door display stand



4-door display stand



arte toscana 4-handle display board



arte toscana 8-handle display board



arrone ironmongery kits display stand



For more information on these promotional materials please talk to your sales representative.



advertising



arte toscana 8-handle display stand



arte toscana packaging



arrone packaging



Doras banners



external doras banner 600mmx2400mm



A5 flyer holder



door labels

Door stands and display panels are an essential element when it comes to assisting our customers in promoting the Doras product.

Available on request, these sales aids are attractively designed and are compact enough to be able to fit into any showroom.

Alternatively, where a more bespoke showroom solution is needed, we are happy to work with the customer and to make recommendations as to which display door models would best suit that customer's requirements.

Printed material is an indispensable part of promoting any product. At Doras we are constantly working on upgrading our brochure or designing flyers for new products.

PROMOTIONAL section

display stands

display boards

banners

flyers

catalogues

packaging

advertising

In order for a door to retain its high standards and perform to required specification, it is essential that careful installation and maintenance procedures be followed.

When you receive your new door we recommend that you check it carefully to ensure that it has not been damaged in transit or storage. Make sure that all components are present and that the door is in good condition.

STORAGE & HANDLING

The following points must be adhered to when storing your doors before hanging.

- Doors must be stored flat (never on edge or on end) in a dry, well ventilated environment.
- Under no circumstances should they be stored in damp, freshly plastered rooms – exposure to moist conditions will cause swelling of the components and consequent distortion of the door. Polythene or protective wrapping must remain on the door as long as possible.
- Natural finish doors must not be stored in a way that wholly or partly exposes them to daylight. Exposure to ultra violet light can cause fading or discolouration of timber and veneers.
- Doors should be conditioned to the prevailing environment before hanging and should not be exposed to abnormal heat, extreme dryness, high humidity or sudden changes of temperature.
- It is essential that all doors should be sealed or knotted and primed on both faces, all four edges and cuts out such as letterboxes and locks immediately after delivery. End grain must be completely protected as this is where the moisture can cause swelling, splitting or warping.

INSTALLATION

When installing your new door the following points should be noted.

- Ensure the properties where the doors are to be hung is completely dry, particularly freshly plastered rooms.
- Three hinges should be fitted to all external doors, doors weighing more than 20 kg (44 pounds) and internal doors where large differences of temperature or humidity on opposing faces can be expected (e.g. bathrooms and airing cupboards). Always use good quality steel or brass 4” hinges (102mm) and 3” hinges (76mm) for ordinary internal doors.
- Any mortice locks, letter plates, ironmongery, etc should be fitted prior to the door being hung.
- When fitting a mortice lock this must not be fitted through the mid rail joint in the door frame. Always position a lock either above or below the doors mid rail. Fitting a lock through a doors joint will impair the performance of the joint and make it unstable.
- Rebating of double doors is not possible without nullifying the guarantee.
- Fire doors must not be altered on site. Any cut-out for glass aperture etc. must not be done without the approval of the door manufacturer or local fire officer.

DECORATION

- The decoration of doors is very important and particular attention should be paid to the following:
- A door should be clean and dry prior to finishing and have a moisture content suitable to the location it is in.
- Any surface marks should be removed using fine sandpaper making sure you rub in the direction of the grain, any dust created by this process

should be removed.

- Make sure that the paint or stain is applied evenly to both sides of the door and that the whole surface area is covered. Pay close attention to top and bottom edges, cut-outs for locks, letter plates, hinges and any glass rebates.
- We recommend that all doors should have between three or four coats or finish. Use good oil based paint (not water based) and include at least one coat primer, one undercoat and two coats of gloss or good quality joinery treatment which must include at least one base coat, one intermediate coat and two finishing coats (e.g. Sadolins, Dulux Woodcare, etc). A base coat primer is not a seal.

MAINTENANCE

- In order for a door to retain its appearance and prolong its life a course of regular maintenance is recommended. Annual inspection should be made and touching up carried out as necessary to prevent timber from deterioration.
- Cleaning frosted glass. Care is required with this glass as it can be marked easily by pets or by finger prints. Cleaning is recommended with warm water and a sponge. Products like CIF work well in removing any dirt which gets into the rough glass surface.
- We will accept no responsibility for products cut down in size after receipt or when utility or structural strength is impaired in fitting or application of hardware. Our liability under our guarantee is limited to the replacement/repair of the door and no liability is accepted for any consequential costs.

GUARANTEE

- Timber is a natural product and as such there may be a certain amount of colour variation in the timber/veneer.
- Distribution of knots may be random and varied.
- Should the door be shown to be defective in materials or construction Doras Distributors undertakes to provide a replacement door free of charge. However, associated costs such as re-hanging, painting or storage cannot be covered under this guarantee.
- Guarantee will be applicable only where it is shown that the procedures for door preparation, installation and protection as outlined have been fully adhered to.
- Rebating of double doors is not possible without nullifying the guarantee.

IMPORTANT

Please inspect your new Doras door carefully and thoroughly. Any physical defects revealed by this inspection should be reported immediately. No claim will be entertained where a door has been removed from its packaging when the inspection described above would have identified the defect without the need for package removal (ie where damage is visible, packaging should not be opened). Any defects which are detectable only after removal of packaging must be reported immediately.

DORAS DOOR protection



FIND YOUR LOCAL STOCKIST

Doras Distributors is a wholesale company and as such deals exclusively with builders' merchants and retail door outlets. We do not deal directly with the public but if you like our products and require further information or wish to see the doors themselves on display you may contact your local supplier.

A list of nationwide suppliers can be found on our website www.dorasdoors.com under the "Where to buy" tab.

YOU CAN ALSO REACH US ON



dorasdoors



doras-doors



@doras_doors



dorasdoors

DORAS DISTRIBUTORS LTD

Unit 7
Park West
Nangor Road
D12 Y6FP

sales@dorasdist.com
www.dorasdoors.com

